

Bulo



WELCOME
TO
OUR NEW
OFFICE
LANDSCAPE

Bulo



ECO DAN. A NEW LEVEL OF REFINED FUNCTIONALITY. A NEW LEVEL, INSPIRED BY JAPANESE MASTERY.

First introduced in 2014, DAN was a collection created around two recognisable elements: the wooden ladder and the recyclable connectors. The name refers to the Japanese word dan, meaning a step or level. The collection expresses rhythm, balance and flexibility through its proportions and construction.

In its early form, DAN explored modularity as a way of working with space. Tables, shelving and workplaces could be arranged with a high degree of flexibility, while the underlying structure maintained visual consistency.

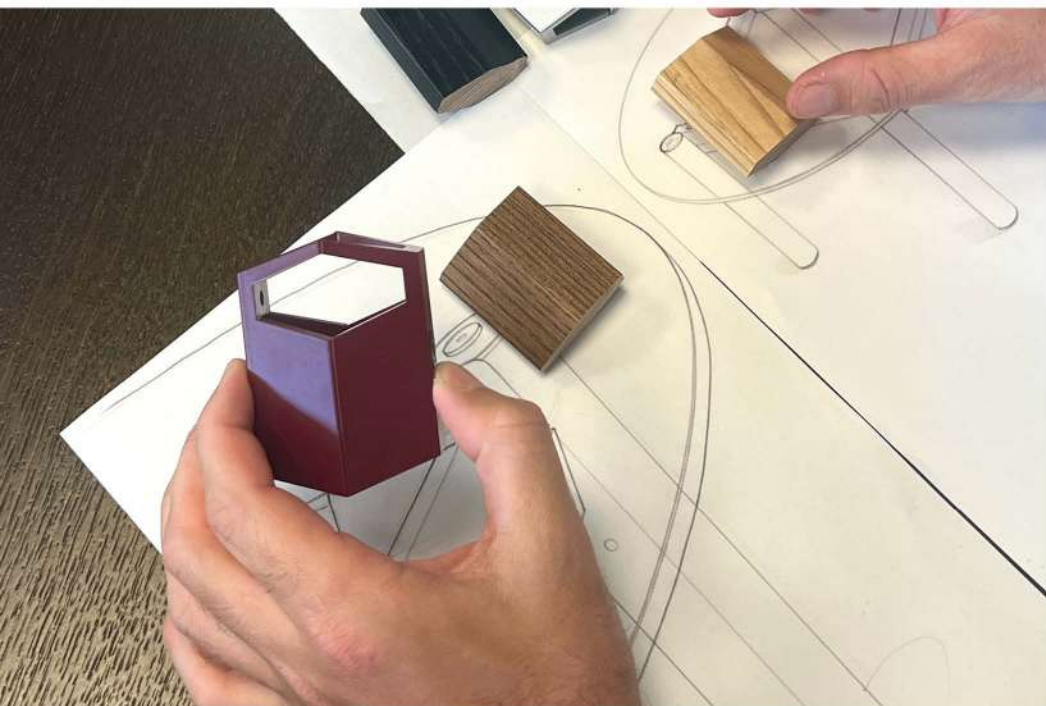
As DAN was applied across a wide range of interiors, the collection gradually evolved. The initial modular approach gave way to a series of clearly articulated pieces, each developed with attention to balance, comfort and long-term use. This transition did not change the appearance of DAN, but strengthened it. The ladder

structure, measured lines and material character remain central to the collection. In 2017, DAN Lounge extended the family with upholstered seating. This addition allowed DAN to move naturally between focused work environments and spaces intended for conversation and shared use, while maintaining the same visual language.

Now DAN expands through a capsule collection that places emphasis on material choices and environmental responsibility. The capsule introduces coffee tables and brings renewed focus to existing meeting tables, racks and seating, now offered in carefully selected sustainable finishes.

Rather than introducing new forms, this addition reinforces the collection through material refinement. Longevity, reuse and responsible production are brought to the foreground. DAN is defined by its ability to remain timeless and iconic over time.

OUR PROMISE TO *the* FUTURE



RECYCLABLE CONNECTIONS

The metal connectors in Dan are intentionally left unchromed. This makes each component fully recyclable and easier to separate at the end of its lifecycle, a thoughtful balance between refined aesthetics and circular design.



INNOVATIVE MATERIALS

At Bulo, we collaborate with Unilin for high-quality panel materials made from recovered and recycled wood, sourced locally. Advanced technologies ensure durable, recyclable panels with a low environmental impact.

Our tabletop finishes are made from 100% recycled and recyclable materials. Together with Unilin, Bulo supports a circular economy through responsible material choices and timeless design.



LOCAL WOOD

The DAN ladders are made with FSC-certified wood, sourced from responsibly managed forests that meet strict environmental, social, and economic standards defined by the Forest Stewardship Council.

ECO DAN COFFEE TABLE

A
NEW
LEVEL
OF
REFINED
FUNCTIONALITY.

A
NEW
LEVEL,
INSPIRED
BY
JAPANESE
MASTERY.

The DAN Coffee Table is a Bulo creation, available in round and rectangular forms. Featuring the signature ladder system, this durable and multifunctional design combines solid wood, veneer, glass, and industrial-inspired details. Perfect in any commercial or residential environments.







OVERVIEW

Collection



Ø 700 x h 330 mm



Ø 700 x h 330 mm

OVERVIEW

Collection



w 1200 x d 800 x h 330 mm



w 1200 x d 800 x h 330 mm



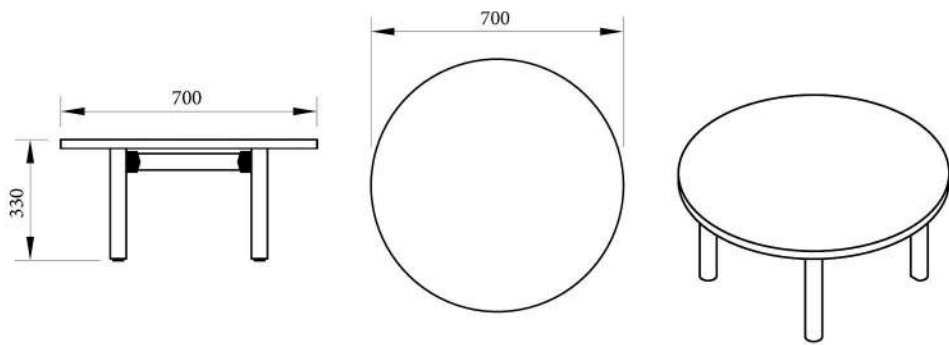
w 1400 x d 800 x h 330 mm



w 1400 x d 800 x h 330 mm

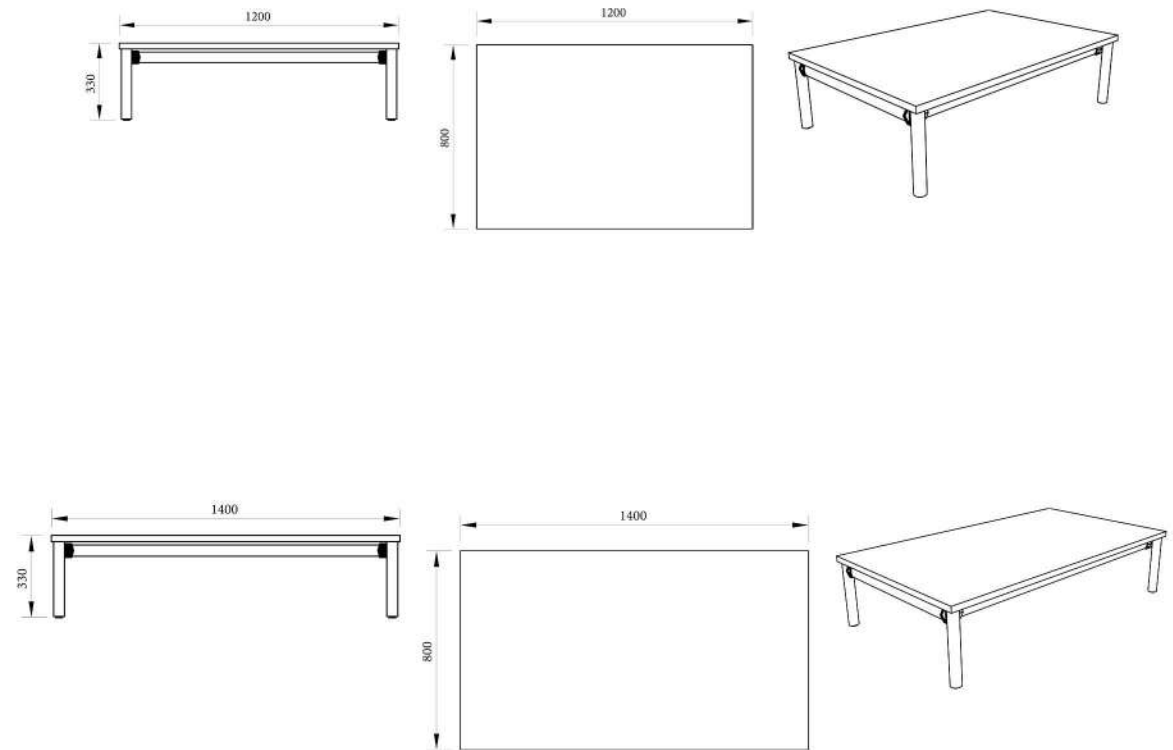
OVERVIEW

Collection



OVERVIEW

Collection





DAN COLLABORATION TABLE

The DAN meeting tables extend the ladder structure across the space. The wooden frame remains visible beneath the tabletop, giving the table a clear rhythm and sense of balance.

Light in appearance yet confident in presence. It supports shared work, conversation and collaboration, making it well suited to co-working environments and collective ways of working.





OVERVIEW

Collection



w 1400 x d 1400 x h 750 mm



w 1600 x d 1600 x h 750 mm



w 3500 x d 1400 x h 750 mm



w 3500 x d 1600 x h 750 mm



w 2400 x d 1400 x h 750 mm



w 2600 x d 1400 x h 750 mm



w 4840 x d 1400 x h 750 mm



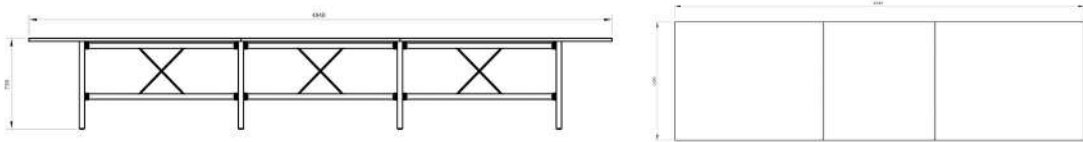
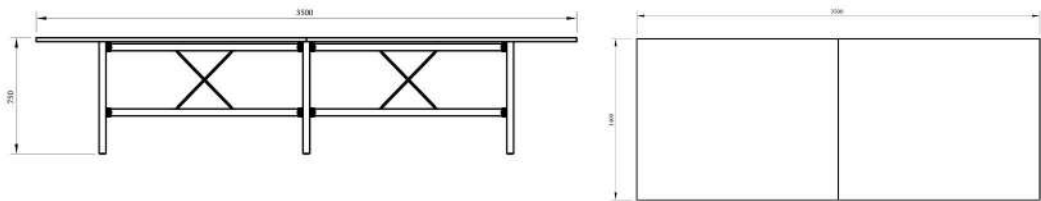
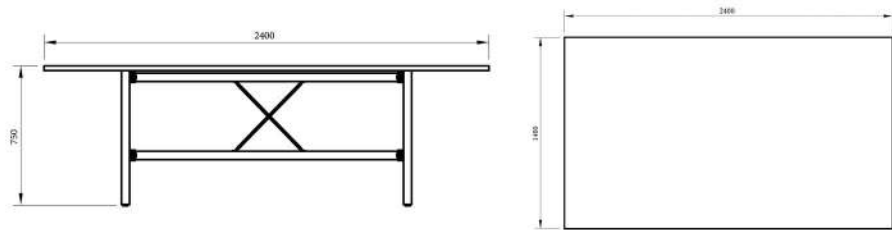
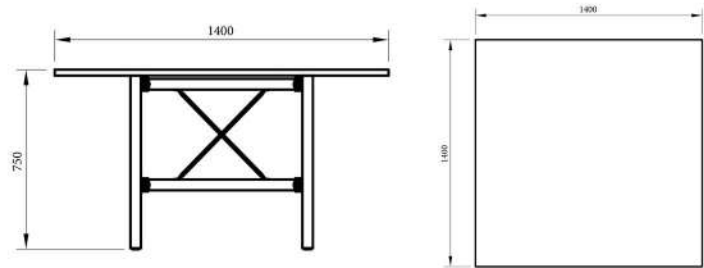
w 4840 x d 1600 x h 750 mm

OVERVIEW

Collection

OVERVIEW

Collection



DAN SEATING

The DAN seating collection consists of the Cove, Lounge 2-Seater and Lounge Armchair, offering versatile lounge comfort in a refined design language.







OVERVIEW

Collection



w 880 x d 783 x h 790 mm
seat height 470 mm



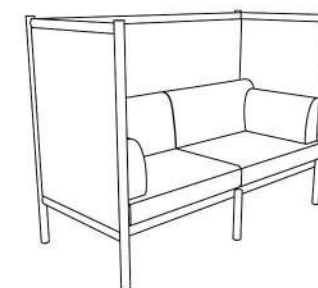
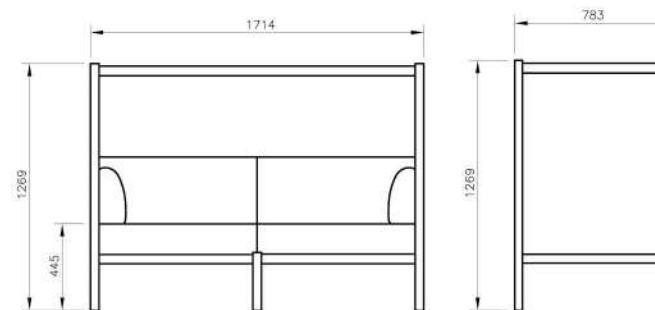
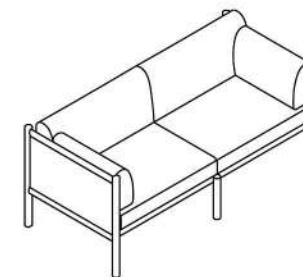
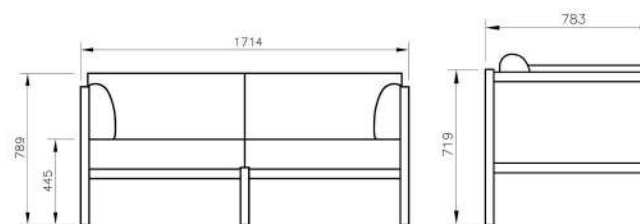
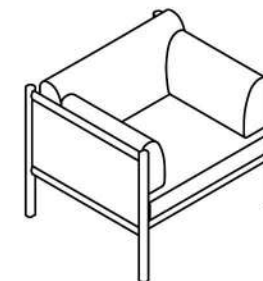
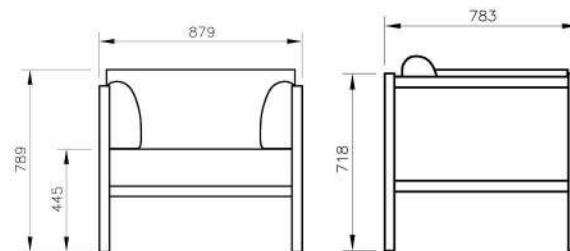
w 1714 x d 783 x h 790 mm
seat height 470 mm



w 1714 x d 783 x h 1270 mm
seat height 470 mm

OVERVIEW

Collection





DAN PINGPONG TABLE

Built on the DAN ladder structure, the DAN PingPong meeting table supports moments of focus and collaboration. With a subtle shift, it transforms into a space for play, inviting movement and informal exchange. A single object that balances work and pause within contemporary shared environments.

OVERVIEW

Collection



w 2740 x d 1525 x h 750 mm



DAN RACK

The DAN rack has always been defined by its ladder structure and unique visible connectors, originally presented in an open and lightweight form. In the new ECO DAN capsule collection, this familiar construction is reworked into a thoughtfully enclosed configuration. The structural ladder frame remains visible, while added panels introduce depth and a greater

sense of order. This shift gives the rack a stronger presence in the room, without losing its clarity or balance. Storage is integrated in a quieter way, allowing the piece to function not only as a practical solution but also as a clearly defined volume in space. The result is a design that feels solid and intentional, well suited to contemporary work and shared environments where design matters.



OVERVIEW

Collection

DAN RACK

Collection



w 1522 x d 433 x h 720 mm



w 1522 x d 433 x h 720 mm



w 2261 x d 433 x h 720 mm



w 2261 x d 433 x h 720 mm



w 1522 x d 433 x h 1140 mm



w 1522 x d 433 x h 1140 mm



w 2261 x d 433 x h 1140 mm



w 2261 x d 433 x h 1140 mm



w 2261 x d 433 x h 720 mm



w 2261 x d 433 x h 720 mm



w 2261 x d 433 x h 1140 mm



w 2261 x d 433 x h 1140 mm

DAN MATERIALS & FINISHES

Every DAN design has a careful selection of materials and finishes. From refined fabrics and warm wood tones to bold connector colours, each element is chosen to create harmony, durability and visual balance. This chapter presents the palette of options that define the DAN collection, inviting you to compose combinations that reflect both character and craftsmanship.



Melamine

Suomi Ash
OH362



Oak rustique
OH327/8ST



Sunset Beige
OU821



Silver Blue
OU648/BS1



Garonne Oak
OH378/BS1



Elegant black
CO113/WW06



Green shadow
OU653/BS1



Fir Green
U699-ST9



Connectors

Pigeon Blue
RAL 5014



Forest Green
RAL 6006



Red
RAL 3016



Lacquered Chrome



Urban Sage
RAL 7002



Burgundy
RAL 3005



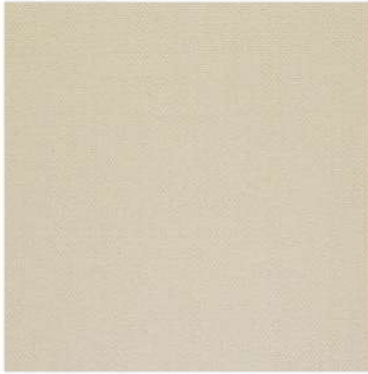
Black
RAL 9005



At Bulo, we work with Unilin to create durable panels from locally sourced recycled wood with a low environmental impact. Our tabletops are made from 100% recycled and recyclable materials, supporting a circular economy through responsible design.

Fabrics

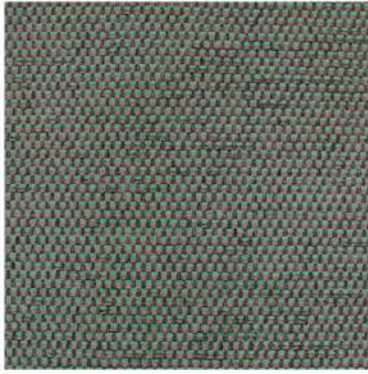
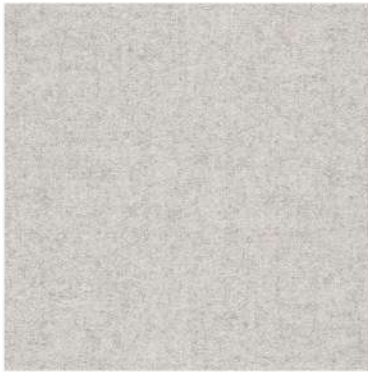
Steelcut 3



Main Line Flax



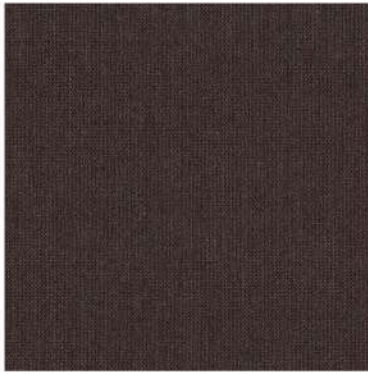
Blazer



César



Shake



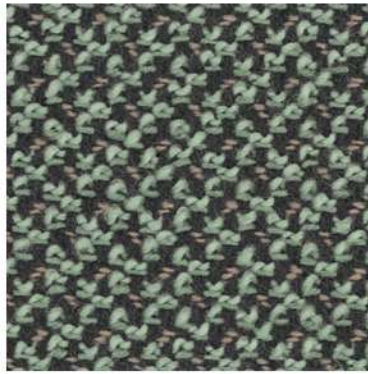
Technicolour

Fabrics

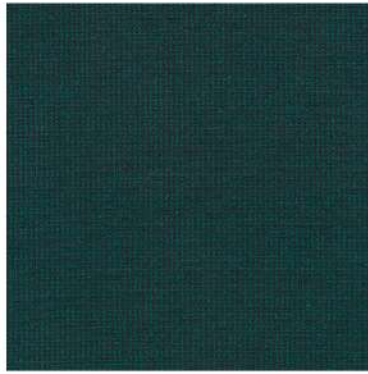
Era



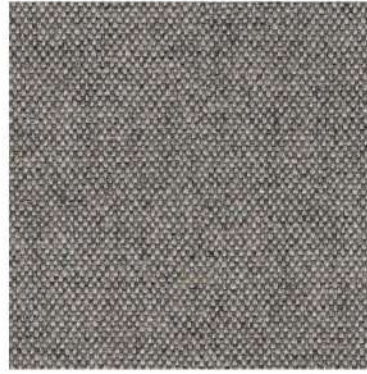
Cleo



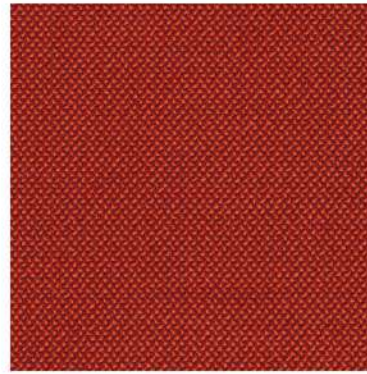
Encircle



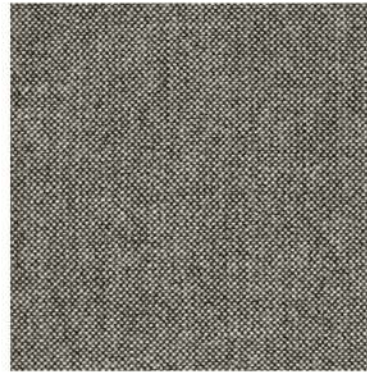
Arco



Credo



Hallingdal 65



Bulo

bulo.com | [@bulodesign](https://twitter.com/bulodesign)
Blarenberglaan 6, Mechelen 2600, Belgium

Bulo

