

# Monica Conference

in collab with Gensler

Bulo





Courtesy Gensler Miami

# GENSLER

Gensler is a global architecture, design and planning firm with 50 locations and more than 6000 professionals networking across the world. Founded in 1965, the firm serves more than 3500 active clients in virtually every industry. Gensler's product development team has selectively worked with manufacturers to design hundreds of successful products. From project brief to prototyping to finalizing the design, we continuously observed their informed criteria and process. Monica meets Gensler's high standard for form, function, quality and sustainable materiality. In 2019 Bulo and Gensler collaborated to design this lounge collection. Since it's first year of production, Monica has become a global favorite design.



## MONICA

Monica is a soft lounge chair with a solid wooden base and a 'draped' upholstered soft shell resting on it. The duality of the chair is based on contrasts between hard and soft, static and fluid. It's almost as if she is tempting gravity with a soft skin that is hanging over a rigid wooden skeleton. Wood is in Bulo's DNA, so it was an obvious choice to leave the beautifully shaped details visible. Monica is a contemporary piece with vintage look that's well adapted to the technicality and comfort of today. Monica is an ideal choice for contract projects in workplace, hospitality and high-end retail. Monica has also developed a strong identity in residential interiors around the world.

## Monica Conference

---



The shell is made of a metal frame; molded in a HR High Density Flexible PU foam. Material: 52 - 66% Polyolblend & 48 - 34% Isocyanate MDI. The Comfort HR Cold cure foam contains no CFK's. Very high comfort standards are being met with this formula while the molded parts are "crushless" due to the composition of the isocyanate. The foam passes the California technical Bulletin 117 test; Test criteria: no open flaming smouldering  $\leq$  45 minutes, vertical char  $\leq$  38 mm

# Monica Conference

5-star base on castors or on glides



Upholstered in a soft, textured fabric, its sculpted form offers both style and support, ideal for long meeting sessions. The sturdy 5-star base is crafted from durable steel and fitted with smooth-rolling castors for easy mobility. Height adjustable for customized seating, Monica Conference brings ergonomic functionality to any meeting space.

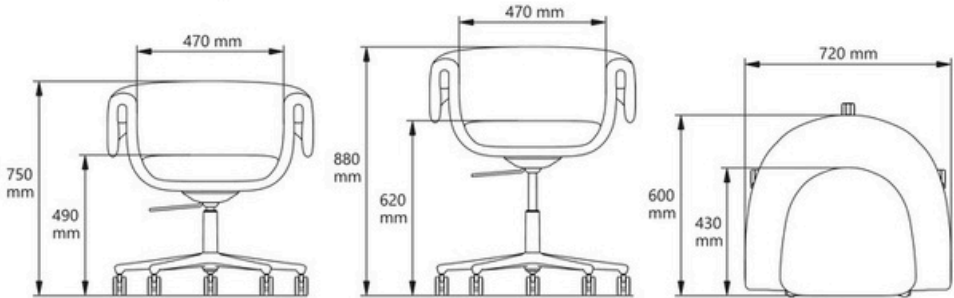
Swivel base available in black and in polished aluminum.

On 5 universal castors.

### Monica Conference on 5-star base

- w 720 mm / 28.3"
- d 600 mm / 23.6"
- h 750 - 880 mm / 29.5" - 34.6"

seat height  
490 - 620 mm / 19.3" - 24.4"



Monica Conference  
On 4 solid wood legs



The legs are made from FSC certified solid wood; treated with water-based lacquers that meet the most strict European standards. The legs are fixed with a double bolt connection to a metal frame that curves under the wing of the chair. This method guarantees the highest level of strength and stability.

Legs available in natural ash, black lacquered ash and ash stained in walnut color.  
On universal glides.

Monica Conference on 4 solid wood legs

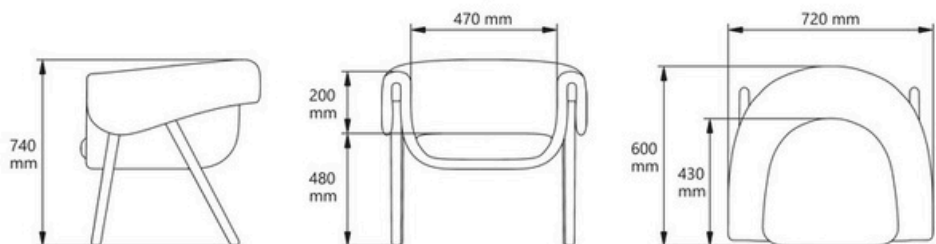
w 720 mm / 28.3"

d 600 mm / 23.6"

h 740 mm / 29.1"

seat height

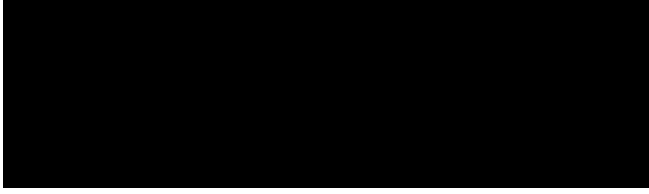
480 mm / 18.9"



## Materials

---

### Aluminum star base



Black

---



Polished

---

### Solid wood



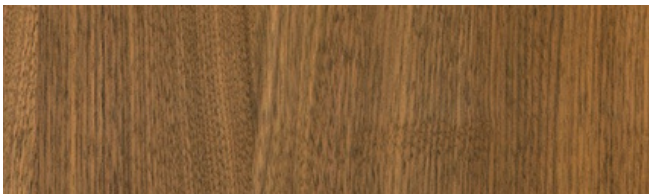
Ash natural

---



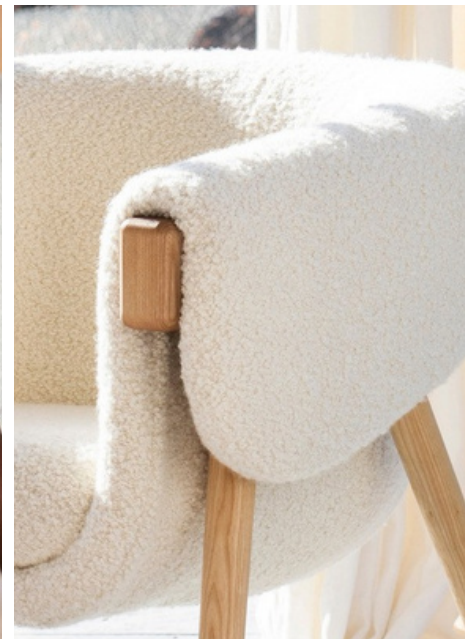
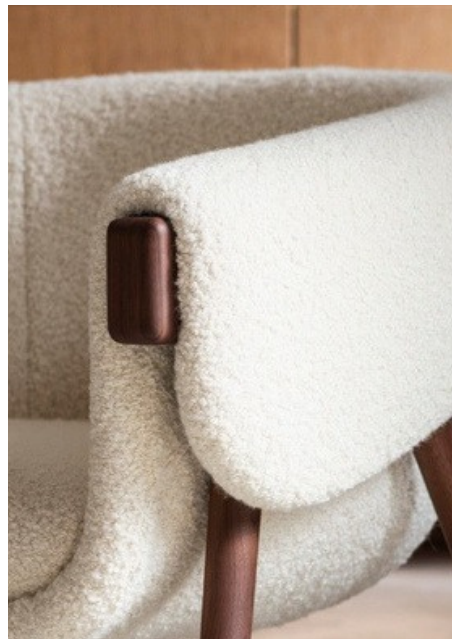
Ash black lacquered

---



Ash stained in walnut color

---

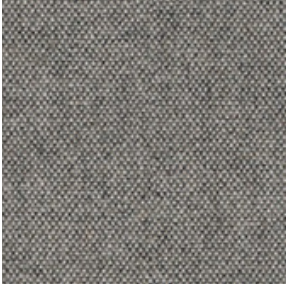


## Upholstery fabrics

---

### Main Line Flax

Category 2 | MLF



**Textile mill** Camira fabrics

**Composition** 70% PureNew Wool, 30% Flax

**Weight** 13 oz/sq yd **Abrasion** ≥100,000 double rubs, ASTM D4157 Wyzenbeek method **Fastness to light** 4, AATCC-16 (40 hours) **Flammability** California Technical Bulletin 117 - 2013, NFPA 260 + UFAC Class 1, BS 7176 Low Hazard, ASTM E84 Class 1 or A (Adhered)

All colorways available

### Main Line Plus

Category 2 | MLP



**Textile mill** Camira fabrics

**Composition** 67% Virgin Wool, 20% Flame Retardant Viscose, 13% Viscose

**Weight** 425 g/m2 ±5% **Abrasion** ≥50,000 Martindale **Fastness to light** 5 (ISO 105 - B02) **Flammability** EN 1021 - 1&2 (cigarette & match) • BS 7176 Low Hazard • BS 5852 Ignition Source 5 • BS 7176 Medium Hazard (Crib 5) • BS 5867-2 Type B Curtains & Drapes • The Furniture and Furnishing (Fire Safety) Regulations 1988 (UK domestic cigarette and match)

All colorways available

### Blazer

Category 3 | BL



**Textile mill** Camira fabrics

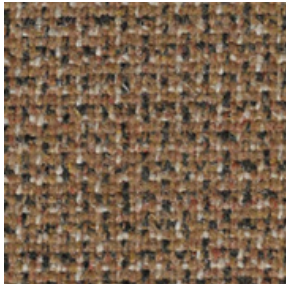
**Composition** 100% Pure New Wool **Weight** 13 1/2 oz/sq yd **Abrasion** ≥75,000 double rubs, ASTM D4157 Wyzenbeek method **Fastness to light** 4, AATCC-16 (40 hours) **Flammability** California Technical Bulletin 117 - 2013, NFPA 260 + UFAC Class 1, BS 7176 Low Hazard, ASTM E84 Class 1 or A (Adhered)

All colorways available

## Upholstery fabrics

## Main Line Twist

Category 3 | MLT



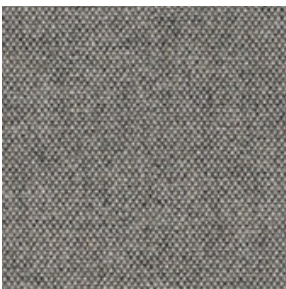
All colorways available

**Textile mill** Camira fabrics**Composition** 75% Virgin Wool, 25% Flax

**Weight** 437 g/m<sup>2</sup> ±5% **Abrasion** ≥50,000 Martindale **Fastness to light** 4-5 (ISO 105 - B02) **Flammability** EN 1021 - 1&2 (cigarette & match) • BS 7176 Low Hazard • BS 5852 Ignition Source 5 • BS 7176 Medium Hazard (Crib 5) • NF D 60-013 • ÖNORM B 3825 B1 & A 3800-1 Q1 (58kg/m<sup>3</sup> CMHR Foam) • UNI 9175 Classe 1 IM • BS 476 Part 7 Class 1 (Adhered) • EN 13501-1 Adhered Class B, s1, d0 • The Furniture and Furnishing (Fire Safety) Regulations 1988 (UK domestic cigarette and match) • IMO FTP Code (Part 8) **Environmental** Certified to the EU Ecolabel • Certified to Indoor Advantage™ Gold • Rapidly renewable and compostable • Made from wool and plant fibre

## Arco

Category 4 | AR



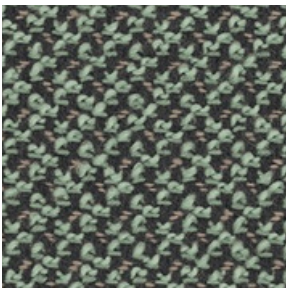
All colorways available

**Textile mill** Rohi**Composition** 95% virgin wool 5% polyamide **Weight** 700 g/m<sup>2</sup> - 980 g/lm**Abrasion** 70.000 rubs ISO 12947-2 **Fastness to light** ≥ 5 ISO 105-B02 (yarn dyed)

**Flammability** wool is naturally flame retardant. Rohi wool fabrics satisfy the following standards with no additional flame retardant finish: CAL TB 117 - 2013, DIN EN 1021-1/ -2, BS 5852 part 1: 1979, UNI 9175 1 IM, IMO 2014/90/EU, Marine Equipment Directive (MED)

## Cleo

Category 4 | CL



All colorways available

**Textile mill** Rohi**Composition** 95% virgin wool 5% polyamide **Weight** 690 g/m<sup>2</sup> - 970 g/lm

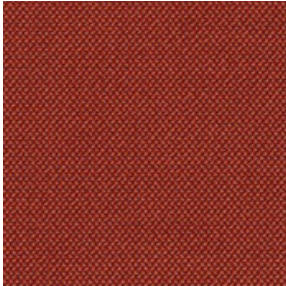
**Sustainability** natural, renewable material, IWTO Guidelines for Wool Sheep Welfare, RAL DE-UZ 117 Att. 3b for "Blue Angel", without flame retardant AB 2998 (US export standard), REACH (EU export standard) **Abrasion** 70.000 rubs ISO 12947-2 **Pilling** ≥ 4-5 ISO 12945-2 **Fastness to light** ≥ 5 ISO 105-B02 (yarn dyed)

**Flammability** wool is naturally flame retardant, rohi wool fabrics satisfy the following standards, with no additional flame retardant finish: CAL TB 117 - 2013, DIN EN 1021- 1/ -2, BS 5852 part 1: 1979, UNI 9175 1 IM, ÖNORM B1/Q1, IMO 2014/90/EU Marine Equipment Directive (MED) NZS 3837 Class 2. With additional flame retardant finish: BS 5852: 2006 Crib5, DIN 4102-1 B2, DIN EN 13501-1 E, FAR 25.853 12 sec. vertical, BKZ 5.3 SN 198898

## Upholstery fabrics

## Credo

Category 4 | CR



## Textile mill Rohi

**Composition** 95% New Wool, 5% PA (polyamide) **Weight** 610 g/m<sup>2</sup> - 870 g/lfm  
**Abrasion** 100.000 rubs, ISO 12947-2 **Pilling** ≥ 4-5 , ISO 12945-2 **Fastness to light** ≥ 5, ISO 105-B02 **Flammability** FAR 25.853 (12 sec. vertical), CAL TB 117 - 2013, DIN 4102-1 B2, DIN EN 13501-1, DIN EN 1021 -1 und -2, BS 5852:1979 (part1), BS 5852:2006 (part2) Crib5, BKZ: 5.3 SN 198898, UNI 9175 (1 IM), NF P92 503-507 M2, IMO: 2014/90/EU Marine Equipment Directive

All colorways available

## Re-Wool 2

Category 4 | RW



## Textile mill Kvadrat

**Composition** 45% wool, worsted 45% recycled wool 10% nylon **Weight** 540 g/lin. m (17.42 oz/ ly) **Abrasion** 100.000 Martindale **Pilling** 4 (ISO 1-5) **Fastness to light** 6-7 (ISO 1-8) **Flammability** AS/NZS 3837 class 2 • SN 198 898 5.3 with treatment • ASTM E84 Class A Unadhered • BS 5852 crib 5 with treatment • AS/NZS 1530.3 • UNI 9175 1IM • IMO FTP Code 2010 Part 8 • ÖNORM B1/Q1 • BS 5852 part 1 • EN 1021-1/2 • US Cal. Bull. 117-2013 • EN 13501 B-s2, d0 with treatment • NF D 60 013 **Environmental** EU Ecolabel • Greenguard Gold • HPD • EPD

All colorways available

## Hallingdal 65

Category 5 | HA



## Textile mill Kvadrat

**Composition** 70%New wool, 30% Viscose

**Weight** 795 g/lin.m **Sustainability** Complies with EU ecolabel “The Flower”

**Abrasion** 100.000 Martindale **Pilling** 3-4 **Fastness to light** 7 **Flammability** AS/NZS 1530.3, BS 5852 Crib 5, BS 5852 part 1, EN 1021-1/2, IMO FTP Code 2010 Part 8, NF D 60 013, NFPA 260, SN 198 898 5.3 with treatment, UNI 9175 1IM, US Cal. Bull. 117-2013, ÖNORM B1/ Q1, BS 5852 ignition source 3

All colorways available

## Upholstery fabrics

## Steelcut 3

Category 5 | CT

**Textile mill** Kvadrat**Composition** 90%New wool (worsted), 10% Nylon**Weight** 825 g/lin.m **Sustainability** Complies with EU ecolabel “The Flower”**Abrasion** 100.000 Martindale **Pilling** 3-4 **Fastness to light** 6 **Flammability** AS/NZS 3837, class 2, BS 5852 part 1, EN 1021-1/2, IMO FTP Code 2010 Part 8, NF D 60 013, SN 198 898 5.3 with treatment, UNI 9175 1IM, US Cal. Bull. 117-2013, ÖNORM B1/ Q1, BS 5852 Crib 5 with treatment, NFPA 260, AS/NZS 1530.3

All colorways available

## Steelcut Trio 3

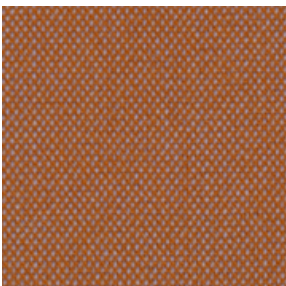
Category 5 | TR

**Textile mill** Kvadrat**Composition** 90%New wool (worsted), 10% Nylon**Weight** 770 g/lin.m **Sustainability** Complies with EU ecolabel “The Flower”**Abrasion** 100.000 Martindale **Pilling** 4 **Fastness to light** 5 **Flammability** AS/NZS 3837, class 2, BS 5852 part 1, EN 1021-1/2, IMO FTP Code 2010 Part 8, NF D 60 013, NFPA 260, SN 198 898 5.3 with treatment, UNI 9175 1IM, US Cal. Bull. 117-2013, ÖNORM B1/ Q1, BS 5852 Crib 5 with treatment, AS/ NZS 1530.3, BS 5852 ignition source 3

All colorways available

## Steelcut Quartet

Category 5 | STQ

**Textile mill** Kvadrat**Composition** 90% wool, worsted 10% nylon**Weight** 770 g/lin. m (24.84 oz/ ly) **Sustainability** EU Ecolabel • Greenguard Gold •HPD • EPD **Abrasion** 100.000 Martindale **Pilling** 4-5 (ISO 1-5) **Fastness to light** 6-7 **Flammability** AS/NZS 3837 class 2 • SN 198 898 5.3 with treatment • ASTM E84 Class A Unadhered • BS 5852 crib 5 with treatment • AS/NZS 1530.3 • UNI 9175 1IM • NFPA 260 • ASTM E84 Class B Adhered • IMO FTP Code 2010 Part 8 • ÖNORM B1/Q1 • BS 5852 part 1 • BS 7176 Low Hazard • EN 1021-1/2 • US Cal. Bull. 117-2013 • EN 13501 B-s2, d0 with treatment • NF D 60 013

All colorways available

## Upholstery fabrics

---

### Vidar 4

Category 5 | VI



**Textile mill** Kvadrat

**Composition** 94% new wool 6% nylon **Weight** 770 g/m2 (24.84 oz/sq ft)

**Sustainability** Complies with EU ecolabel “The Flower” **Abrasion** 100,000

Martindale **Pilling** 4 (ISO 1-5) **Fastness to light** 7 **Flammability** BS 5852 crib 5 with treatment • BS 5852 part 1 • IMO FTP Code 2010 Part 8 • NF D 60 013 • NFPA 260 • UNI 9175 11M • US Cal. Bull. 117-2013 • EN 1021-1/2 • AS/NZS 3837 class 2 • GB 50222 B1 with treatment (Chinese) • SN 198 898 5.3 with treatment • IMO FTP Code 2010 Part 7 with treatment • NFPA 701 with treatment

All colorways available

### Baru

Category 6 | BAR



**Textile mill** Sahco/Kvadrat

**Composition** 87% wool 10% polyester 3% nylon **Weight** 770 g/lin. m (24.84 oz/ ly)

**Sustainability** Greenguard Gold • HPD • EPD **Abrasion** 65,000 Martindale **Pilling** 5

(ISO 1-5) **Fastness to light** 5-6 **Flammability** BS 5852 crib 5 with treatment • IMO FTP Code 2010 Part 8 • BS 5852 part 1 • EN 1021-1/2 • US Cal. Bull. 117-2013

All colorways available

## Upholstery leather

---

Sand grey



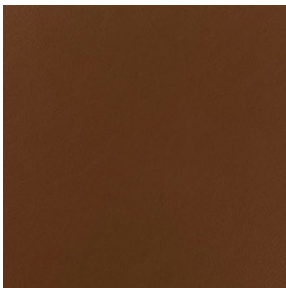
Obsidian green



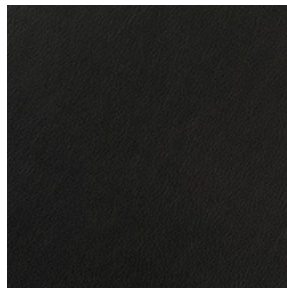
Dark brown



Tobacco brown



Black



**Origin** European bullhides

**Thickness** 1.0/1.2 mm

**Grain** full grain

**Type** semi-aniline

Extra's soft touch; strong, easy to use and maintain

**Flammability** DIN EN 1021 Part I + II British Standard 5852 1 + 2 California 117 – class 1 IMO FTPC Part 8 IMO Res. A.652 (16)

**Ecolabel** Blauer Engel RAL UZ-148

Leather is a natural material with natural variation in color and surface structure. No two are alike. A variety of markings like healed scars and abrasions may be visible and are not considered defects but are characteristics of genuine leather. On inquiry and at a surcharge, other leather colors than our standard colors may be available.

## COM / COL

---

Customer's own material/leather Customers can supply their own fabric or own leather if preceded by consultation with Bulo or your Bulo partner. Bulo reserves the right to reject the COM/COL we find unsuitable. Warranty conditions on COM/COL available on request.

Fabric requirement for 1 Monica Conference chair:

- fabric width 140 cm / 55" : 2 lm / 2.2 yrd
- fabric width 130 cm / less than 55": 2,2 lm / 2.4 yrd

Leather requirement available on request, depending on type and quantity of chairs