

# VVD Slim Chair

by Vincent Van Duysen

Bulo





## Vincent Van Duysen

Award-winning Belgian architect and designer, Vincent Van Duysen, started his career working in Milan with Cinzia Ruggeri and Aldo Cibic-Sottsass Associati in 1985. Van Duysen established his own studio in Antwerp in 1990, engaging in a wide range of projects in Belgium, Europe, the Middle East and the US - with no limits to the diversity: interiors, buildings, private houses, apartment complexes, office concepts, retail, etc. Van Duysen is also renowned for the design of smaller objects and furniture he developed for international design houses.

From the very start, the driving force in Van Duysen's work has been the close relationship he nourishes between architecture, interior and product design. In his projects, the subtle transitions between all of these disciplines are realised in combination with a spatial design that continuously aims for the essence. This is an architectural language that embraces aesthetics while resisting passing trends and fashion.

Throughout his career, Vincent Van Duysen has received multiple accolades, the most recent of which are the Flemish Culture Prize for Design and the Belgian Designer of the Year Award.

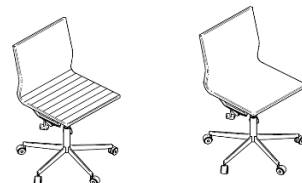




## VVD Slim Chair

VVD Slim Chair is a separate collection within the VVD Chair collection, with an even slimmer profile. The seat and back of VVD Slim Chair are upholstered all around, with or without seat stitching. Armrests are in aluminium eather black anodized or titanium color anodized. The base is always black. VVD Slim Chair comes as an office chair, a visitor's chair and a lounge version.

Seat stitching :  
 VVD Slim Chair with seat stitching in tone on tone color  
 VVD Slim Chair without seat stitching



## VVD Slim Chair

### Desk chair



#### Desk chair

on 5-star base

Base diam.: 680 mm / 27"

Mechanism handles in black porcelain



#### FUNCTIONS DESK CHAIR

1. Adjustment to body weight
2. Steel tilt mechanism based on a torsion bar
3. Seat height adjustment
4. Fixation of the tilt mechanism

#### VVD Slim Desk chair

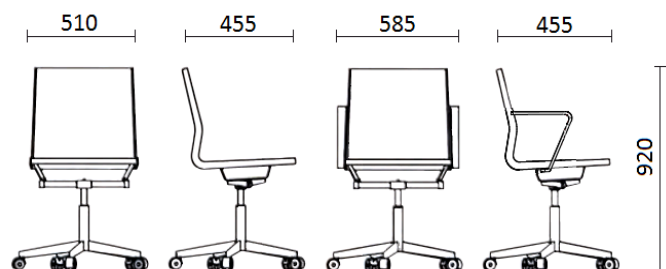
**w** 585 mm / 23"

**d** 455 mm / 18"

**h** 920 mm / 36"

#### seat height

465 - 530 mm / 18 - 21"





## VVD Slim Chair

### Visitor's chair



Visitor's chair on 5-star base

5-star base on castors

Base diam.: 680 mm / 27"

On felt glides

Visitor's chair on 4-star base

4-star base on glides

Base diam.: 680 mm / 27"

On felt glides

#### VVD Slim visitor's chair

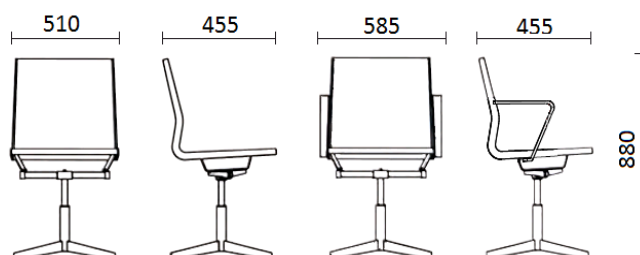
**w** 585 mm / 23"

**d** 455 mm / 18"

**h** 880 mm / 35"

#### seat height

470 mm / 19"



## VVD Slim Chair

### Lounge chair



#### Lounge chair

4-star base on glides

Base diam.: 680 mm / 27"

On felt glides

#### VVD Slim Lounge chair

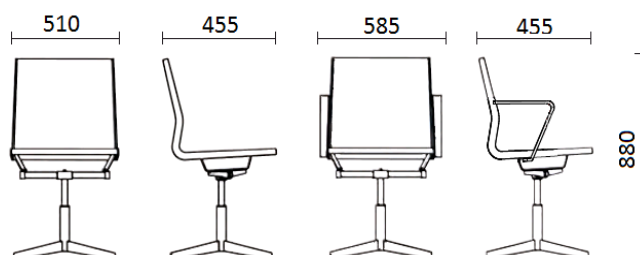
**w** 585 mm / 23"

**d** 455 mm / 18"

**h** 880 mm / 35"

#### seat height

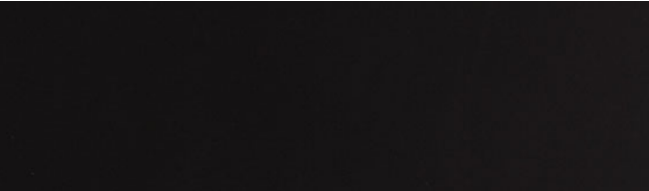
440 mm / 17"



# Materials

---

## Base



---

Black lacquered	ZW
-----------------	----

---

## Arm rests



---

Solid aluminium black anodised	04
--------------------------------	----

---



---

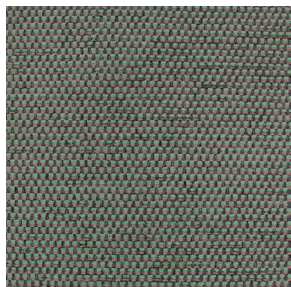
Solid aluminium titanium anodised	TI
-----------------------------------	----

---

## Upholstery Fabrics

### César

Category 2 | CE



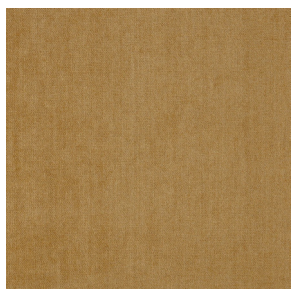
All colorways available

**Textile mill** Aristide**Composition** 100% PES**Weight** 565 gr/rm**Abrasion** Martindale 60,000 rubs (BS 5690)**Light resistance** 4**Flammability** BS5852, ignition source 0 & 1 (cigarette & match), EN1021, EN1021-1 (cigarette) & EN1021-2 (match)

**Aquaclean** Aquaclean treatment system covers every single fiber with an invisible molecular coating. This avoids dirt to penetrate the fibers, which helps to maintain the fabric and prolong the life of your sofa cover. Use just water to clean occasional stains like wine, coffee and food.

### Comeback

Category 2 | CO



All colorways available

**Textile Mill** Keymer**Composition** 86% PL, 9% CO, 5% MA**Abrasion** 200.000 Martindale**Fastness to light** 6**Flammability** EN1021 1 & 2

### Lario

Category 2 | LAR



All colorways available

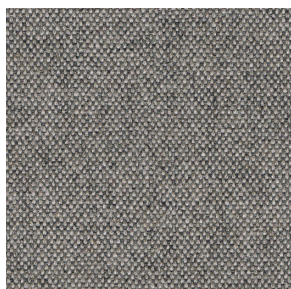
**By** Bulo**Composition** 42% cotton, 32% acrylic, 26% polyester**Weight** 980 g/lm**Abrasion** 45.000 rubs**Pilling** 4 on 5.000 rubs**Flammability** TB 117 CALIFORNIA, BS 5852 Cigarette  
With treatment: BS 5852, Match, CRIB5



## Upholstery Fabrics

### Mainline Flax

Category 2 | MLF

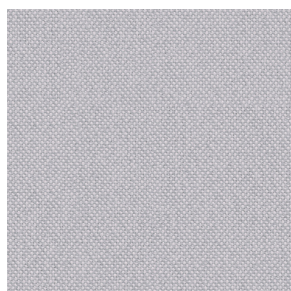


All colorways available

**Textile mill** Camira fabrics**Composition** 70% Pure New Wool, 30% Flax**Weight** 13 oz/sq yd**Abrasion** ≥100,000 double rubs, ASTM D4157 Wyzenbeek method**Fastness to light** 4, AATCC-16 (40 hours)**Flammability** California Technical Bulletin 117 - 2013, NFPA 260 + UFAC Class 1, BS 7176 Low Hazard, ASTM E84 Class 1 or A (Adhered)

### Meld

Category 3 | ME



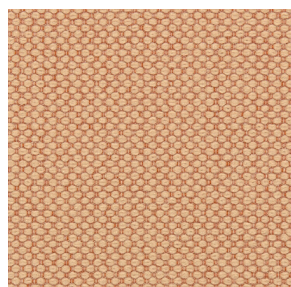
All colorways available

**Textile mill** Maharam**Composition** 68% Post-Consumer Recycled Polyester, 32% Polyester**Finish** Stain repellent**Weight** 500 g/lm**Abrasion** ASTM D4157, 100,000 double rubs Wyzenbeek**Fastness to light** AATCC 16E, 40+ hours**Flammability** AS/NZS 1530.3, AS/NZS 3837 Unadhered, ASTM E 84 Unadhered, CAL 117-2013, CAN ULC S102 Unadhered

Environmental Greenguard Gold Certified, Greenguard Certified, GRS Certified Content, REACH Compliant, Contains Recycled Content, FR Free

### Merit

Category 3 | MR



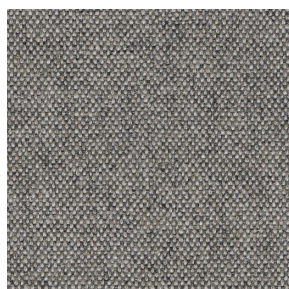
All colorways available

**Textile mill** Maharam**Composition** 76% Post-Consumer Recycled Polyester, 24% Polyester**Weight** 17.1 oz/ly (500 gr/lm)**Abrasion** ASTM D4157, 100,000 double rubs Wyzenbeek**Fastness to light** AATCC 16E, 40+ hours**Flammability** AS/NZS 1530.3, AS/NZS 3837 Unadhered, ASTM E 84 Unadhered BS 476 Unadhered\*, BS 5852 Crib 5\*, CAL 117-2013, CAN ULC S102 Unadhered EN 1021-1\*, EN 1021-2\*, EN 13501 Unadhered\*, GB/T 17591\*, ISO 5660 Unadhered NFPA 260, SN 198 898\*, \*passes with additional treatment**Environmental**, Greenguard Gold Certified, GRS Certified Content, REACH Compliant, Contains Recycled Content, FR Free

## Upholstery Fabrics

### Arco

Category 4 | AR



All colorways available

**Textile mill** Rohi**Composition** 95% virgin wool 5% polyamide**Weight** 700 g/m<sup>2</sup> - 980 g/lm**Abrasion** 70.000 rubs ISO 12947-2**Fastness to light** ≥ 5 ISO 105-B02 (yarn dyed)

**Flammability** wool is naturally flame retardant. Rohi wool fabrics satisfy the following standards with no additional flame retardant finish: CAL TB 117 - 2013, DIN EN 1021-1/ -2, BS 5852 part 1: 1979, UNI 9175 1 IM, IMO 2014/90/EU, Marine Equipment Directive (MED)

### Cleo

Category 4 | CL



All colorways available

**Textile mill** Rohi**Composition** 95% virgin wool 5% polyamide**Weight** 690 g/m<sup>2</sup> - 970 g/lm

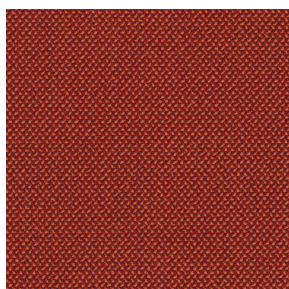
**Sustainability** natural, renewable material, IWTO Guidelines for Wool Sheep Welfare, RAL DE-UZ 117 Att. 3b for "Blue Angel", without flame retardant AB 2998 (US export standard), REACH (EU export standard)

**Abrasion** 70.000 rubs ISO 12947-2**Pilling** ≥ 4-5 ISO 12945-2**Fastness to light** ≥ 5 ISO 105-B02 (yarn dyed)

**Flammability** wool is naturally flame retardant, rohi wool fabrics satisfy the following standards, with no additional flame retardant finish: CAL TB 117 – 2013, DIN EN 1021-1/ -2, BS 5852 part 1: 1979, UNI 9175 1 IM, ÖNORM B1/Q1, IMO 2014/90/EU Marine Equipment Directive (MED) NZS 3837 Class 2. With additional flame retardant finish: BS 5852: 2006 Crib5, DIN 4102-1 B2, DIN EN 13501-1 E, FAR 25.853 12 sec. vertical, BKZ 5.3 SN 198898

### Credo

Category 4 | CR



All colorways available

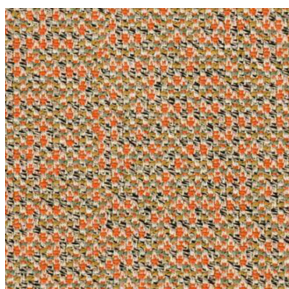
**Textile mill** Rohi**Composition** 95% New Wool, 5% PA (polyamide)**Weight** 610 g/m<sup>2</sup> - 870 g/lm**Abrasion** 100.000 rubs, ISO 12947-2**Pilling** ≥ 4-5, ISO 12945-2**Fastness to light** ≥ 5, ISO 105-B02

**Flammability** FAR 25.853 (12 sec. vertical), CAL TB 117 - 2013, DIN 4102-1 B2, DIN EN 13501-1, DIN EN 1021 -1 und -2, BS 5852:1979 (part1), BS 5852:2006 (part2) Crib5, BKZ: 5.3 SN 198898, UNI 9175 (1 IM), NF P92 503-507 M2, IMO: 2014/90/EU Marine Equipment Directive

## Upholstery Fabrics

### Mica

Category 4 | MI



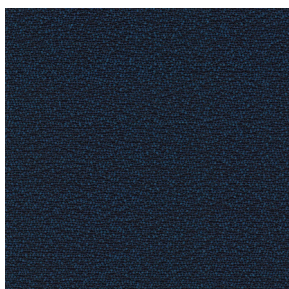
All colorways available

**Textile mill** Rohi**Composition** 95% virgin wool 5% polyamide**Weight** 600 g/m<sup>2</sup> - 840 g/lfm**Abrasion** ≥ 70.000 rubs ISO 12947-2**Pilling** ≥ 4-5 ISO 12945-2**Fastness to light** ≥ 5 ISO 105-B02 (yarn dyed)**Flammability** wool is naturally flame retardant, rohi wool fabrics satisfy the following standards with no additional flame retardant finish: CAL TB 117 – 2013

DIN EN 1021-1/-2, BS 5852 part 1: 1979, UNI 9175 1 IM, ÖNORM B1/Q1, IMO 2014/90/EU Marine Equipment Directive (MED). With additional flame retardant finish: BS 5852: 2006 Crib5, DIN 4102-1 B2, DIN EN 13501-1 E, FAR 25.853 12 sec. vertical

### Shake

Category 4 | SH

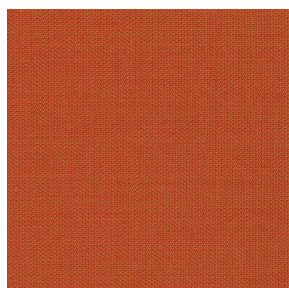


All colorways available

**Textile mill** Rohi**Composition** 95% WV 5% PA**Weight** 440 g/m<sup>2</sup> - 660 g/lm**Abrasion** ≥ 70.000 rubs ISO 12947-2**Pilling** ≥ 4-5, ISO 12945-2**Fastness to light** ≥ 5, ISO 105-B02 (yarn dyed)**Flammability** CAL TB 117 - 2013, DIN EN 1021 -1 / -2, BS 5852:1979 (part1), UNI 9175 (1 IM), ÖNORM B1/Q1, IMO 2014/90/EU Marine Equipment Directive.

### Topia

Category 4 | TP



All colorways available

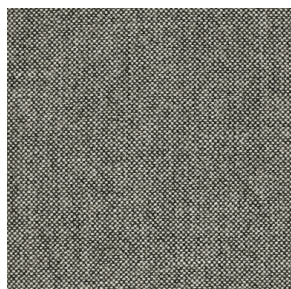
**Textile mill** Rohi**Composition** 95% Wool, 5% PA**Weight** 440 g/m<sup>2</sup> - 660 g/lfm**Abrasion** 50.000 rubs, ISO 12947-2**Pilling** ≥ 4-5, ISO 12945-2**Fastness to light** ≥ 5, ISO 105-B02**Flammability** FAR 25.853 (12 Sek. vertikal), CAL TB 117 - 2013, DIN 4102-1 B2, DIN EN 13501-1, DIN EN 1021 -1 and -2, BS 5852:1979 (part1), BS 5852:2006 (part2) Crib5, BKZ: 5.3 SN 198898, UNI 9175 (1 IM), IMO: 2014/90/EU Marine Equipment Directive, Train: EN 45545-2 R21 ISO 5660-1 (HL3)



## Upholstery Fabrics

### Hallingdal 65

Category 5 | HA

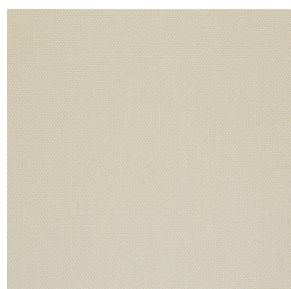


All colorways available

**Textile mill** Kvadrat**Composition** 70% New wool, 30% Viscose**Weight** 795 g/lin.m**Sustainability** Complies with EU ecolabel "The Flower"**Abrasion** 100.000 Martindale**Pilling** 3-4**Fastness to light** 7**Flammability** AS/NZS 1530.3, BS 5852 Crib 5, BS 5852 part 1, EN 1021-1/2, IMO FTP Code 2010 Part 8, NF D 60 013, NFPA 260, SN 198 898 5.3 with treatment, UNI 9175 1IM, US Cal. Bull. 117-2013, ÖNORM B1/ Q1, BS 5852 ignition source 3

### Steelcut 3

Category 5 | CT

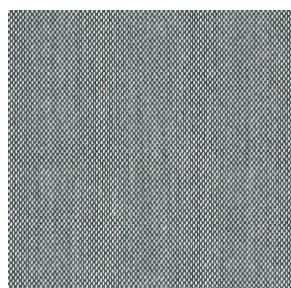


All colorways available

**Textile mill** Kvadrat**Composition** 90% New wool (worsted), 10% Nylon**Weight** 825 g/lin.m**Sustainability** Complies with EU ecolabel "The Flower"**Abrasion** 100.000 Martindale**Pilling** 3-4**Fastness to light** 6**Flammability** AS/NZS 3837, class 2, BS 5852 part 1, EN 1021-1/2, IMO FTP Code 2010 Part 8, NF D 60 013, SN 198 898 5.3 with treatment, UNI 9175 1IM, US Cal. Bull. 117-2013, ÖNORM B1/ Q1, BS 5852 Crib 5 with treatment, NFPA 260, AS/NZS 1530.3

### Steelcut Trio 3

Category 5 | TR



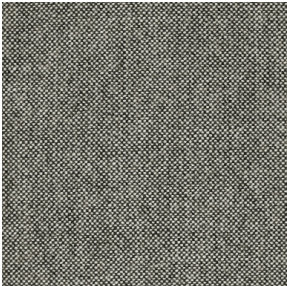
All colorways available

**Textile mill** Kvadrat**Composition** 90% New wool (worsted), 10% Nylon**Weight** 770 g/lin.m**Sustainability** Complies with EU ecolabel "The Flower"**Abrasion** 100.000 Martindale**Pilling** 4**Fastness to light** 5**Flammability** AS/NZS 3837, class 2, BS 5852 part 1, EN 1021-1/2, IMO FTP Code 2010 Part 8, NF D 60 013, NFPA 260, SN 198 898 5.3 with treatment, UNI 9175 1IM, US Cal. Bull. 117-2013, ÖNORM B1/ Q1, BS 5852 Crib 5 with treatment, AS/NZS 1530.3, BS 5852 ignition source 3

## Upholstery Fabrics

### Vidar 4

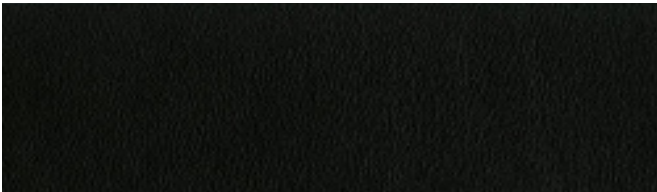
Category 5 | VI



All colorways available

**Textile mill** Kvadrat  
**Composition** 94% new wool 6% nylon  
**Weight** 770 g/m<sup>2</sup> (24.84 oz/sq ft)  
**Sustainability** Complies with EU ecolabel “The Flower”  
**Abrasion** 100,000 Martindale  
**Pilling** 4 (ISO 1-5)  
**Fastness to light** 7  
**Flammability** BS 5852 crib 5 with treatment • BS 5852 part 1 • IMO FTP Code 2010 Part 8 • NF D 60 013 • NFPA 260 • UNI 9175 1IM • US Cal. Bull. 117-2013 • EN 1021-1/2 • AS/NZS 3837 class 2 • GB 50222 B1 with treatment (Chinese) • SN 198 898 5.3 with treatment • IMO FTP Code 2010 Part 7 with treatment • NFPA 701 with treatment

# Upholstery Leather



Black	L1
-------	----