

VVD Chair

by Vincent Van Duysen

Bulo





Vincent Van Duysen

Award-winning Belgian architect and designer, Vincent Van Duysen, started his career working in Milan with Cinzia Ruggeri and Aldo Cibic-Sottsass Associati in 1985. Van Duysen established his own studio in Antwerp in 1990, engaging in a wide range of projects in Belgium, Europe, the Middle East and the US - with no limits to the diversity: interiors, buildings, private houses, apartment complexes, office concepts, retail, etc. Van Duysen is also renowned for the design of smaller objects and furniture he developed for international design houses.

From the very start, the driving force in Van Duysen's work has been the close relationship he nourishes between architecture, interior and product design. In his projects, the subtle transitions between all of these disciplines are realised in combination with a spatial design that continuously aims for the essence. This is an architectural language that embraces aesthetics while resisting passing trends and fashion.

Throughout his career, Vincent Van Duysen has received multiple accolades, the most recent of which are the Flemish Culture Prize for Design and the Belgian Designer of the Year Award.



VVD Chair

The VVD Chair is a refined piece designed by Belgian architect Vincent Van Duysen. It is characterized by pure lines, a specific profile, remarkable ergonomic qualities and the use of innovative materials. The front and back are upholstered in various fabrics or leather and the side profiles come in a variety of natural wood veneers and lacquers. Armrests are in aluminium eather black anodized or titanium color anodized. The base is available in brushed nickel plated steel and lacquer. The VVD Chair comes as an office chair with high or medium high back, a visitor's chair and a lounge version.

All desk chairs in the collection always have black glazed porcelain handles on the mechanism. VVD Chair on castors is available with black pvc castors or castors with stainless steel cover. Hard castors for carpet floors or castors for hard floors or wooden floors.

VVD Chair

Desk chair with high back



Desk chair with high back

With or without arm rests

On 5-star base

Base diam.: 680 mm / 27"

Mechanism handles in black porcelain



FUNCTIONS DESK CHAIR

1. Adjustment to body weight
2. Steel tilt mechanism based on a torsion bar
3. Seat height adjustment
4. Fixation of the tilt mechanism

VVD desk chair with high back

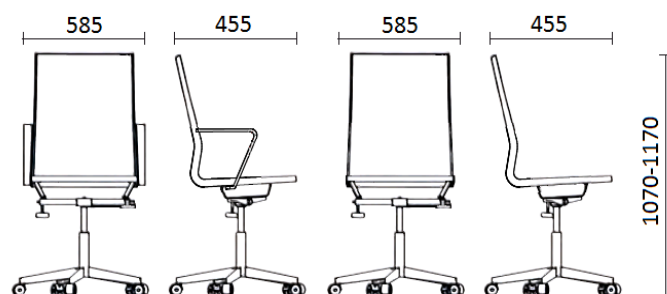
w 585 mm / 23"

d 455 mm / 18"

h 1070 - 1170 mm / 42 - 46"

seat height

465 - 540 mm / 18 - 21"



VVD Chair

Desk chair with middle high back



Desk chair with middle high back

With or without arm rests

On 5-star base

Base diam.: 680 mm / 27"

Mechanism handles in black porcelain



FUNCTIONS DESK CHAIR

1. Adjustment to body weight
2. Steel tilt mechanism based on a torsion bar
3. Seat height adjustment
4. Fixation of the tilt mechanism

VVD desk chair with middle high back

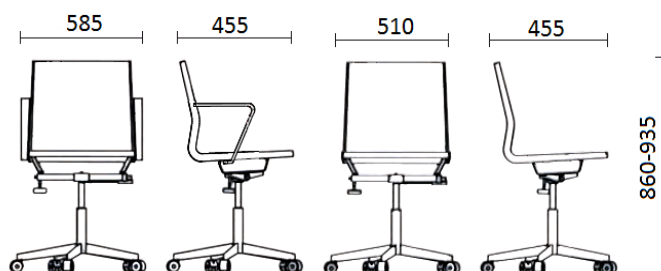
w 585 mm / 23"

d 455 mm / 18"

h 860 - 935 mm / 33 - 37"

seat height

465 - 540 mm / 18 - 21"



VVD Chair

Visitor's chair



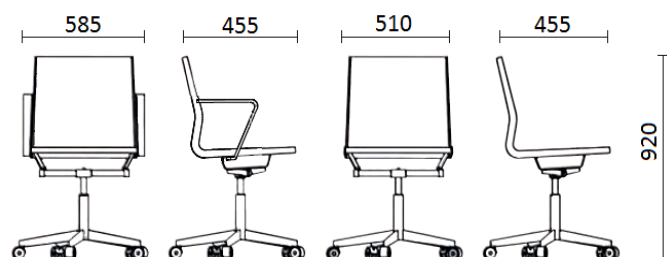
Visitor's chair on 5-star base
 Middle high back
 With or without arm rests
 5-star base on castors
 Base diam.: 680 mm / 27"

Visitor's chair on 4-star base
 Middle high back
 With or without arm rests
 4-star base on glides
 Base diam.: 680 mm

VVD visitor's chair

w 585 mm / 23"
d 455 mm / 18"
h 920 mm / 36"

seat height
 470 mm / 19"



VVD Chair

Lounge chair



Lounge chair

Middle high back

With or without arm rests

4-star base on glides

Base diam.: 680 mm / 27"

VVD Lounge chair

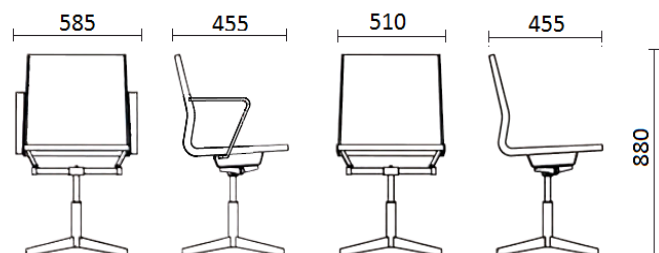
w 585 mm / 23"

d 455 mm / 18"

h 880 mm / 35"

seat height

440 mm / 17"



Materials

Base



Brushed nickel plated steel RV

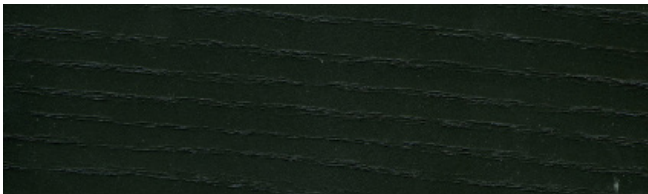


Black lacquered ZW

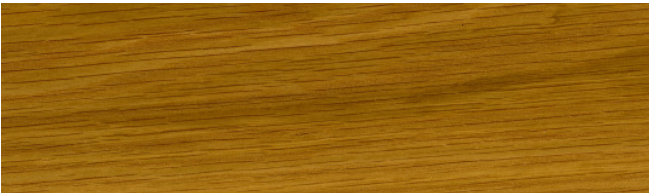
Side profiles



Black lacquer ZW



Black lacquered oak veneer EE



European oak veneer EK



Walnut veneer NO



Padouk veneer PA



Wenge veneer WE

Materials

Arm rests



Solid aluminium black anodised	04
--------------------------------	----

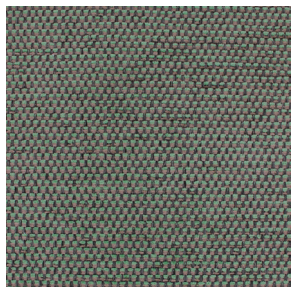


Solid aluminium titanium anodised	TI
-----------------------------------	----

Upholstery Fabrics

César

Category 2 | CE



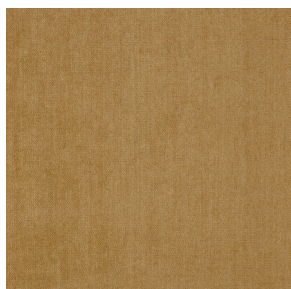
All colorways available

Textile mill Aristide**Composition** 100% PES**Weight** 565 gr/rm**Abrasion** Martindale 60,000 rubs (BS 5690)**Light resistance** 4**Flammability** BS5852, ignition source 0 & 1 (cigarette & match), EN1021, EN1021-1 (cigarette) & EN1021-2 (match)

Aquaclean Aquaclean treatment system covers every single fiber with an invisible molecular coating. This avoids dirt to penetrate the fibers, which helps to maintain the fabric and prolong the life of your sofa cover. Use just water to clean occasional stains like wine, coffee and food.

Comeback

Category 2 | CO



All colorways available

Textile Mill Keymer**Composition** 86% PL, 9% CO, 5% MA**Abrasion** 200.000 Martindale**Fastness to light** 6**Flammability** EN1021 1 & 2

Lario

Category 2 | LAR



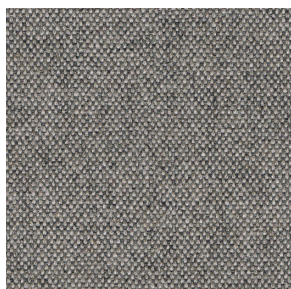
All colorways available

By Bulo**Composition** 42% cotton, 32% acrylic, 26% polyester**Weight** 980 g/lm**Abrasion** 45.000 rubs**Pilling** 4 on 5.000 rubs**Flammability** TB 117 CALIFORNIA, BS 5852 Cigarette
With treatment: BS 5852, Match, CRIB5

Upholstery Fabrics

Mainline Flax

Category 2 | MLF



Textile mill Camira fabrics

Composition 70% Pure New Wool, 30% Flax

Weight 13 oz/sq yd

Abrasion ≥100,000 double rubs, ASTM D4157 Wyzenbeek method

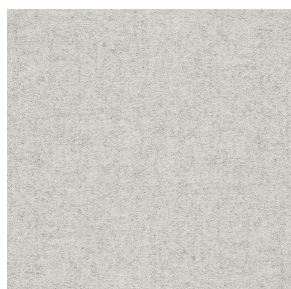
Fastness to light 4, AATCC-16 (40 hours)

Flammability California Technical Bulletin 117 - 2013, NFPA 260 + UFAC Class 1, BS 7176 Low Hazard, ASTM E84 Class 1 or A (Adhered)

All colorways available

Blazer

Category 3 | BL



Textile mill Camira fabrics

Composition 100% Pure New Wool

Weight 13 1/2 oz/sq yd

Abrasion ≥75,000 double rubs, ASTM D4157 Wyzenbeek method

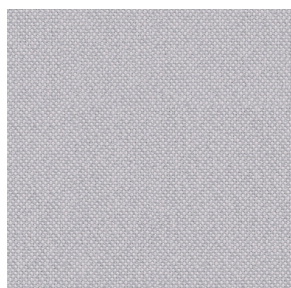
Fastness to light 4, AATCC-16 (40 hours)

Flammability California Technical Bulletin 117 - 2013, NFPA 260 + UFAC Class 1, BS 7176 Low Hazard, ASTM E84 Class 1 or A (Adhered)

All colorways available

Meld

Category 3 | ME



Textile mill Maharam

Composition 68% Post-Consumer Recycled Polyester, 32% Polyester

Finish Stain repellent

Weight 500 g/lm

Abrasion ASTM D4157, 100,000 double rubs Wyzenbeek

Fastness to light AATCC 16E, 40+ hours

Flammability AS/NZS 1530.3, AS/NZS 3837 Unadhered, ASTM E 84 Unadhered, CAL 117-2013, CAN ULC S102 Unadhered

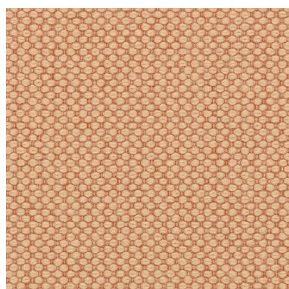
Environmental Greenguard Gold Certified, Greenguard Certified, GRS Certified Content, REACH Compliant, Contains Recycled Content, FR Free

All colorways available

Upholstery Fabrics

Merit

Category 3 | MR



All colorways available

Textile mill Maharam**Composition** 76% Post-Consumer Recycled Polyester, 24% Polyester**Weight** 17.1 oz/ly (500 gr/lm)**Abrasion** ASTM D4157, 100,000 double rubs Wyzenbeek**Fastness to light** AATCC 16E, 40+ hours**Flammability** AS/NZS 1530.3, AS/NZS 3837 Unadhered, ASTM E 84 Unadhered BS 476 Unadhered*, BS 5852 Crib 5*, CAL 117-2013, CAN ULC S102 Unadhered EN 1021-1*, EN 1021-2*, EN 13501 Unadhered*, GB/T 17591*, ISO 5660 Unadhered NFPA 260, SN 198 898*, *passes with additional treatment**Environmental**, Greenguard Gold Certified, GRS Certified Content, REACH Compliant, Contains Recycled Content, FR Free

Remix 3

Category 3 | RE

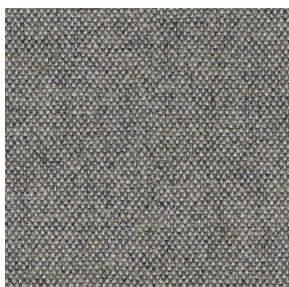


All colorways available

Textile mill Kvadrat**Composition** 90% new wool worsted 10% nylon**Weight** 420 g/lm**Abrasion** 100.000 Martindale**Pilling** 4**Fastness to light** 6**Flammability** AS/NZS 1530.3, BS 5852 part 1, IMO FTP Code 2010 Part 8, NF D 60 013, NFPA 260, UNI 9175 1IM, US Cal. Bull. 117-2013, EN 1021-1/2, AS/NZS 3837 class 2, ÖNORM B1/Q1, ASTM E84 Class A Unadhered, ASTM E84 Class A Adhered

Arco

Category 4 | AR



All colorways available

Textile mill Rohi**Composition** 95% virgin wool 5% polyamide**Weight** 700 g/m2 - 980 g/lm**Abrasion** 70.000 rubs ISO 12947-2**Fastness to light** ≥ 5 ISO 105-B02 (yarn dyed)**Flammability** wool is naturally flame retardant. Rohi wool fabrics satisfy the following standards with no additional flame retardant finish: CAL TB 117 - 2013, DIN EN 1021-1/ -2, BS 5852 part 1: 1979, UNI 9175 1 IM, IMO 2014/90/EU, Marine Equipment Directive (MED)

Upholstery Fabrics

Canvas 2

Category 4 | CA



All colorways available

Textile mill Kvadrat**Composition** 90% New wool (worsted), 10% Nylon**Weight** 480 g/lin.m**Abrasion** 100.000 Martindale**Pilling** 4**Fastness to light** 6**Flammability** AS/NZS 1530.3, BS 5852 part 1, EN 1021-1/2, IMO FTP Code 2010 Part 8, NF D 60 013, NFPA 260, SN 198 898 5.3 with treatment, UNI 9175 1IM, US Cal. Bull. 117-2013, ÖNORM B1/ Q1, BS 5852 ignition source 3, BS 5852 Crib 5 with treatment

Cleo

Category 4 | CL

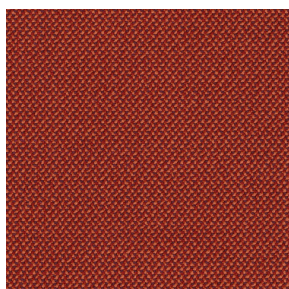


All colorways available

Textile mill Rohi**Composition** 95% virgin wool 5% polyamide**Weight** 690 g/m2 - 970 g/lm**Sustainability** natural, renewable material, IWTO Guidelines for Wool Sheep Welfare, RAL DE-UZ 117 Att. 3b for "Blue Angel", without flame retardant AB 2998 (US export standard), REACH (EU export standard)**Abrasion** 70.000 rubs ISO 12947-2**Pilling** ≥ 4-5 ISO 12945-2**Fastness to light** ≥ 5 ISO 105-B02 (yarn dyed)**Flammability** wool is naturally flame retardant, rohi wool fabrics satisfy the following standards, with no additional flame retardant finish:, CAL TB 117 – 2013, DIN EN 1021-1/ -2, BS 5852 part 1: 1979, UNI 9175 1 IM, ÖNORM B1/Q1, IMO 2014/90/EU Marine Equipment Directive (MED)NZS 3837 Class 2. With additional flame retardant finish: BS 5852: 2006 Crib5, DIN 4102-1 B2, DIN EN 13501-1 E, FAR 25.853 12 sec. vertical, BKZ 5.3 SN 198898

Credo

Category 4 | CR



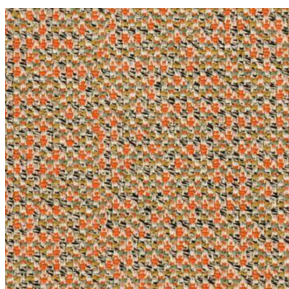
All colorways available

Textile mill Rohi**Composition** 95% New Wool, 5% PA (polyamide)**Weight** 610 g/m² - 870 g/lfm**Abrasion** 100.000 rubs, ISO 12947-2**Pilling** ≥ 4-5 , ISO 12945-2**Fastness to light** ≥ 5, ISO 105-B02**Flammability** FAR 25.853 (12 sec. vertical), CAL TB 117 - 2013, DIN 4102-1 B2, DIN EN 13501-1, DIN EN 1021 -1 und -2, BS 5852:1979 (part1), BS 5852:2006 (part2) Crib5, BKZ: 5.3 SN 198898, UNI 9175 (1 IM), NF P92 503-507 M2, IMO: 2014/90/EU Marine Equipment Directive

Upholstery Fabrics

Mica

Category 4 | MI



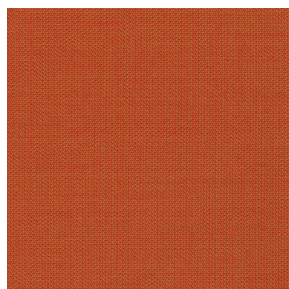
All colorways available

Textile mill Rohi**Composition** 95% virgin wool 5% polyamide**Weight** 600 g/m² - 840 g/lfm**Abrasion** ≥ 70.000 rubs ISO 12947-2**Pilling** ≥ 4-5 ISO 12945-2**Fastness to light** ≥ 5 ISO 105-B02 (yarn dyed)**Flammability** wool is naturally flame retardant, rohi wool fabrics satisfy the following standards with no additional flame retardant finish: CAL TB 117 – 2013

DIN EN 1021-1/-2, BS 5852 part 1: 1979, UNI 9175 1 IM, ÖNORM B1/Q1, IMO 2014/90/EU Marine Equipment Directive (MED). With additional flame retardant finish: BS 5852: 2006 Crib5, DIN 4102-1 B2, DIN EN 13501-1 E, FAR 25.853 12 sec. vertical

Topia

Category 4 | TP

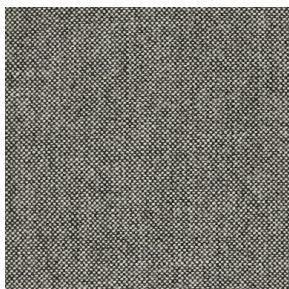


All colorways available

Textile mill Rohi**Composition** 95% Wool, 5% PA**Weight** 440 g/m² - 660 g/lfm**Abrasion** 50.000 rubs, ISO 12947-2**Pilling** ≥ 4-5, ISO 12945-2**Fastness to light** ≥ 5, ISO 105-B02**Flammability** FAR 25.853 (12 Sek. vertikal), CAL TB 117 - 2013, DIN 4102-1 B2, DIN EN 13501-1, DIN EN 1021 -1 and -2, BS 5852:1979 (part1), BS 5852:2006 (part2) Crib5, BKZ: 5.3 SN 198898, UNI 9175 (1 IM), IMO: 2014/90/EU Marine Equipment Directive, Train: EN 45545-2 R21 ISO 5660-1 (HL3)

Hallingdal 65

Category 5 | HA



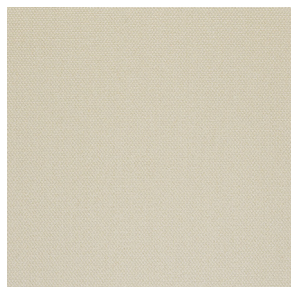
All colorways available

Textile mill Kvadrat**Composition** 70% New wool, 30% Viscose**Weight** 795 g/lin.m**Sustainability** Complies with EU ecolabel "The Flower"**Abrasion** 100.000 Martindale**Pilling** 3-4**Fastness to light** 7**Flammability** AS/NZS 1530.3, BS 5852 Crib 5, BS 5852 part 1, EN 1021-1/2, IMO FTP Code 2010 Part 8, NF D 60 013, NFPA 260, SN 198 898 5.3 with treatment, UNI 9175 1IM, US Cal. Bull. 117-2013, ÖNORM B1/ Q1, BS 5852 ignition source 3

Upholstery Fabrics

Steelcut 3

Category 5 | CT

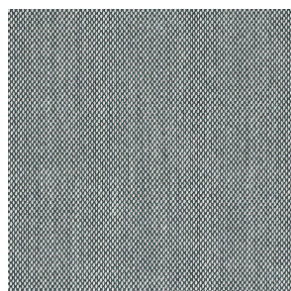


All colorways available

Textile mill Kvadrat**Composition** 90% New wool (worsted), 10% Nylon**Weight** 825 g/lin.m**Sustainability** Complies with EU ecolabel "The Flower"**Abrasion** 100.000 Martindale**Pilling** 3-4**Fastness to light** 6**Flammability** AS/NZS 3837, class 2, BS 5852 part 1, EN 1021-1/2, IMO FTP Code 2010 Part 8, NF D 60 013, SN 198 898 5.3 with treatment, UNI 9175 1IM, US Cal. Bull. 117-2013, ÖNORM B1/ Q1, BS 5852 Crib 5 with treatment, NFPA 260, AS/NZS 1530.3

Steelcut Trio 3

Category 5 | TR

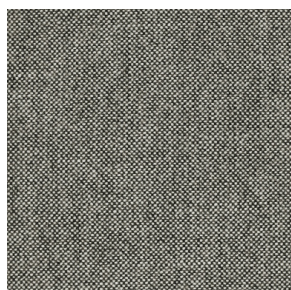


All colorways available

Textile mill Kvadrat**Composition** 90% New wool (worsted), 10% Nylon**Weight** 770 g/lin.m**Sustainability** Complies with EU ecolabel "The Flower"**Abrasion** 100.000 Martindale**Pilling** 4**Fastness to light** 5**Flammability** AS/NZS 3837, class 2, BS 5852 part 1, EN 1021-1/2, IMO FTP Code 2010 Part 8, NF D 60 013, NFPA 260, SN 198 898 5.3 with treatment, UNI 9175 1IM, US Cal. Bull. 117-2013, ÖNORM B1/ Q1, BS 5852 Crib 5 with treatment, AS/NZS 1530.3, BS 5852 ignition source 3

Vidar 4

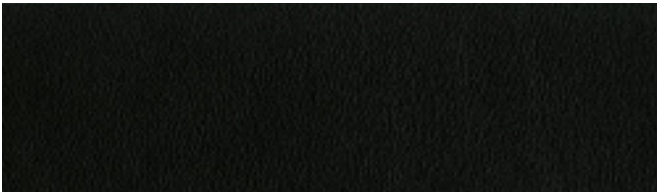
Category 5 | VI



All colorways available

Textile mill Kvadrat**Composition** 94% new wool 6% nylon**Weight** 770 g/m² (24.84 oz/sq ft)**Sustainability** Complies with EU ecolabel "The Flower"**Abrasion** 100,000 Martindale**Pilling** 4 (ISO 1-5)**Fastness to light** 7**Flammability** BS 5852 crib 5 with treatment • BS 5852 part 1 • IMO FTP Code 2010 Part 8 • NF D 60 013 • NFPA 260 • UNI 9175 1IM • US Cal. Bull. 117-2013 • EN 1021-1/2 • AS/NZS 3837 class 2 • GB 50222 B1 with treatment (Chinese) • SN 198 898 5.3 with treatment • IMO FTP Code 2010 Part 7 with treatment • NFPA 701 with treatment

Upholstery Leather



Black	L1
-------	----