

Skater

by Hannes Wettstein

Bulo





Hannes Wettstein

The late Swiss designer Hannes Wettstein (1958-2008), was a product designer in heart and in soul. Besides making products, he was also active as an interior architect, having designed a variety of hotels, offices and showrooms. Wettstein apprenticed as a draughtsman in his early career and then trained himself in design and architecture. He was fascinated by technology, art history and architecture. Despite keeping a low profile, Wettstein's work reaches a wide audience. His designs range from furniture to products such as bicycles, lamps, pens, razors and watches. Whilst simple in appearance, his work is the result of a rigorous process of rethinking design: everyday actions and the purpose of things, which led him to creating surprising solutions that stand the test of time.



Skater

Inspired by skateboards, Skater is a simple and informal seating element designed by Hannes Wettstein. A true mouth-curler for the office or a fun gadget for at home. It is available on skateboard wheels or stationery with glides. Finished in white and black HPL or veneer.

Skater

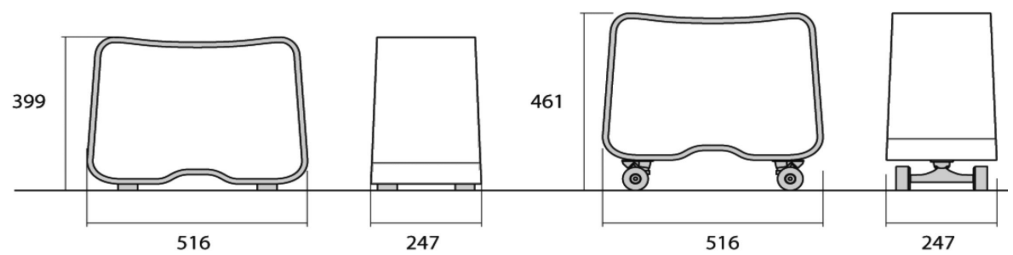


Plywood shell is FSC certified.

Water-based lacquers that are used meet the most strict european norms.

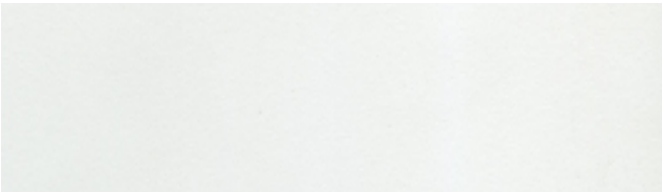
Skater

w 516 mm / 20"
d 247 mm / 10"
h 399-461mm / 16"-18"

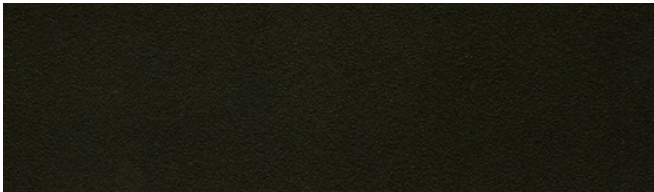


Materials

Shell



HPL lily white



HPL black



Maple veneer