

# Monica

in collab with Gensler





Courtesy Gensler Miami

## GENSLER

Gensler is a global architecture, design and planning firm with 50 locations and more than 6000 professionals networking across the world. Founded in 1965, the firm serves more than 3500 active clients in virtually every industry. Gensler's product development team has selectively worked with manufacturers to design hundreds of successful products. From project brief to prototyping to finalizing the design, we continuously observed their informed criteria and process. Monica meets Gensler's high standard for form, function, quality and sustainable materiality. In 2019 Bulo and Gensler collaborated to design this lounge collection. Since it's first year of production, Monica has become a global favorite design.



## Monica

Monica is a lounge chair with a unique duality: its' tailored form and solid wooden base provide a well-organized structure, while a softly draped upholstered soft shell rests like a blanket over the form. The identity of the chair is based on contrasts between hard and soft, static and fluid. Monica is a contemporary design with vintage references; adapted to the technicality, scale and comfort of today. Monica is an excellent specification for workplace, hospitality and residential projects.

## Monica

---



The shell is made of a metal frame; molded in a HR High Density Flexible PU foam. Material: 52 - 66% Polyolblend & 48 - 34% Isocyanate MDI. The Comfort HR Cold cure foam contains no CFK's. Very high comfort standards are being met with this formula while the molded parts are "crushless" due to the composition of the isocyanate. The foam passes the California technical Bulletin 117 test; Test criteria: no open flaming smouldering  $\leq$  45 minutes, vertical char  $\leq$  38 mm

For most intensive use, it is recommended to use the chrome swivel base with cast-aluminium connection element.

**Monica**  
**On 4 solid wood legs**



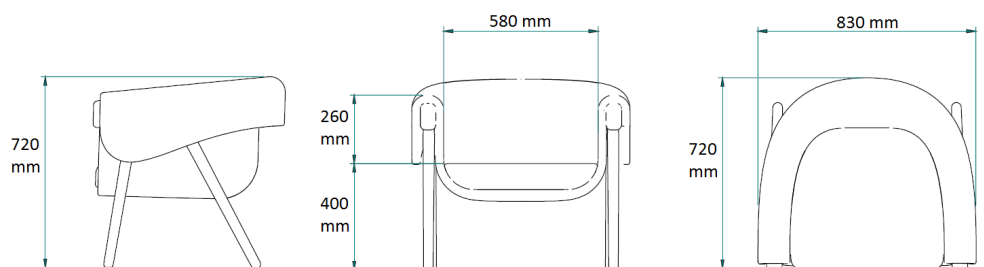
The legs are made from FSC certified solid wood; treated with water-based lacquers that meet the most strict european norms. The legs are fixed with a double bolt connection to a metal frame that curves under the wing of the chair. This method guarantees the highest level of strength and stability for the frame.

Legs available in natural ash, black lacquered ash and natural walnut.  
 On felt glides or without glides.

**Monica on 4 solid wood legs**

**w** 830 mm /  
**d** 32.5" 720 mm  
**h** / 28" 720 mm /  
 28"

**seat height**  
 400 mm / 16"



## Monica

### On 4-star swivel base



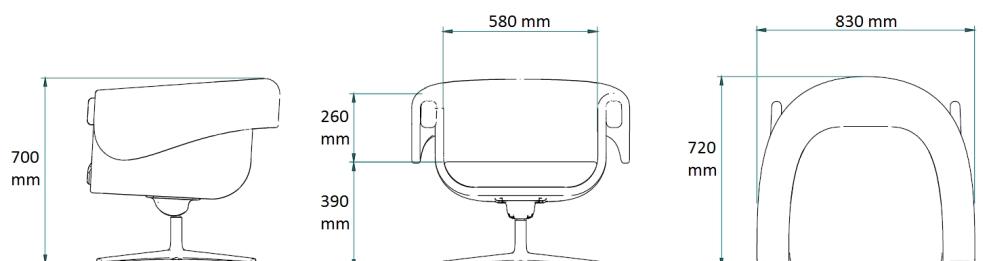
The armrests are made from FSC certified solid wood; treated with water-based lacquers that meet the most strict european norms. The legs are made from steel, certified, ISO 9001:2015, 14001:2015

Available in black and in chrome.  
On felt glides.

#### Monica on 4-star swivel base

**w** 830 mm / 32.5"  
**d** 720 mm / 28"  
**h** 700 mm / 27.5"

**seat height**  
390 mm / 15.5"



# Monica Dubbel



The armrests are made from FSC certified solid wood; treated with water-based lacquers that meet the most strict european norms. The legs are made from steel, certified, ISO 9001:2015, 14001:2015

Available in black and in chrome.

## Monica Dubbel

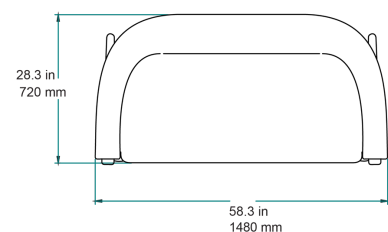
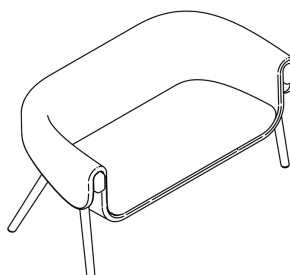
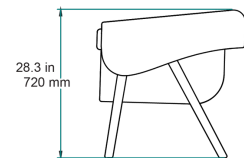
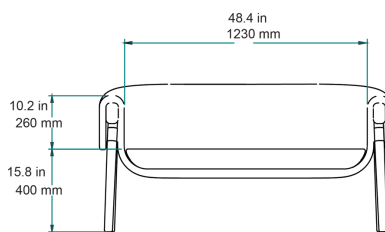
**w** 1230 mm / 48.4"

**d** 720 mm / 28"

**h** 720 mm / 28.3"

### seat height

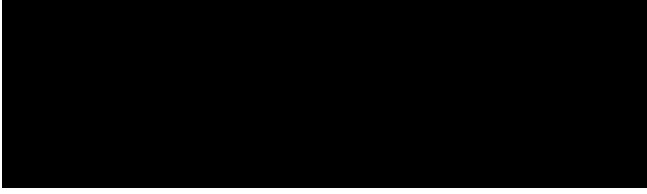
400 mm / 15.75"



# Materials

---

## Aluminium starbase



Black lacquer

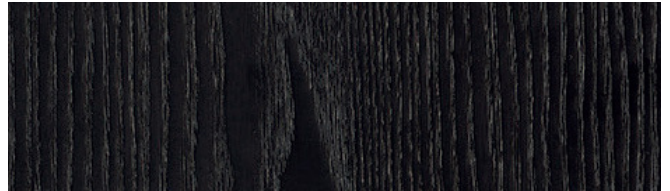


Chrome

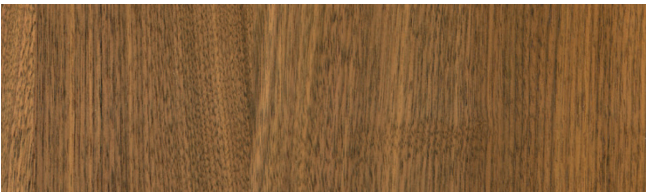
## Solid wood



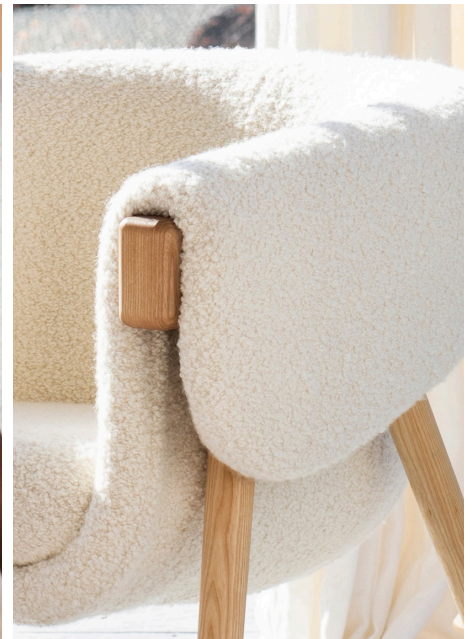
Ash natural



Ash lacquered black



Walnut natural

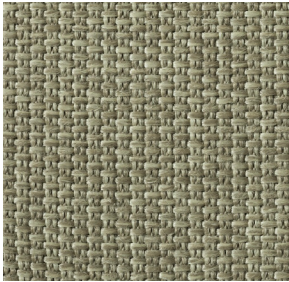




## Upholstery Fabrics

### Cico

Category 1 | CI



**By** Bulo

**Composition** 100% Polypropylene

**Weight** 1.063 g/lm

**Abrasion** 30.000 rubs

**Fastness to light** 7/8

**Flammability** TB 177 CALIFORNIA, BS 5852 Cigarette, BS Match - with treatment

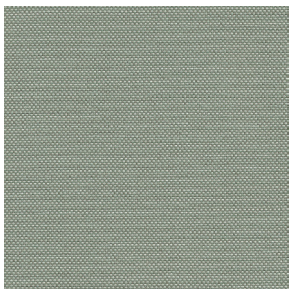
**Pilling** 4-5 on 5.000 rubs

**Sustainability** OEKO-TEX standard 100, GREENGUARD gold

All colorways available

### Quest

Category 1 | QE



**Textile mill** Camira

**Composition** 100% post-consumer recycled polyester including 75% SEAQUAL® YARN

**Weight** 330g/m<sup>2</sup> ±5%

**Abrasion** Heavy duty / 10 year guarantee. Independently certified to ≥100,000 Martindale cycles

**Light resistance** 4-6 (ISO 105 - B02)

**Flammability** EN 1021 - 1 (cigarette), EN 1021 - 2 (match), BS 7176 Low Hazard

UNI 9175 Classe 1 IM, BS 476 Part 7 Class 1Y (Adhered), EN 13501-1 Adhered Class

B, s1, d0, EN 13501-1 Un-adhered Class B, s1, d0, BS 5852 Ignition Source 5 with

EnviroFlam5, BS 7176 Medium Hazard with EnviroFlam5, IMO FTP Code

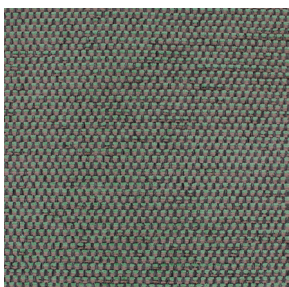
(Part 8) with EnviroFlam5

All colorways available

Camira Fabrics partnered with the SEAQUAL INITIATIVE to combat marine plastic pollution. SEAQUAL® YARN is woven entirely from post-consumer recycled plastic. Quest is a balanced hopsack weave enhanced by the discat-dyed SEAQUAL® YARN.

### César

Category 2 | CE



**Textile mill** Aristide

**Composition** 100% PES

**Weight** 565 gr/rm

**Abrasion** Martindale 60,000 rubs (BS 5690)

**Light resistance** 4

**Flammability** BS5852, ignition source 0 & 1 (cigarette & match), EN1021,

EN1021-1 (cigarette) & EN1021-2 (match)

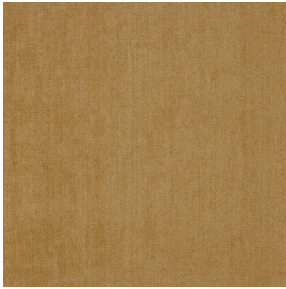
All colorways available

**Aquaclean** Aquaclean treatment system covers every single fiber with an invisible molecular coating. This avoids dirt to penetrate the fibers, which helps to maintain the fabric and prolong the life of your sofa cover. Use just water to clean occasional stains like wine, coffee and food.

## Upholstery Fabrics

### Comeback

Category 2 | CO

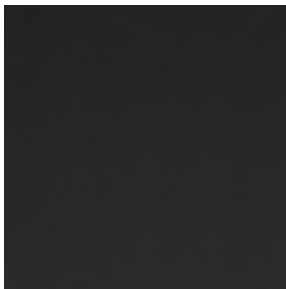


**Textile Mill** Keymer  
**Composition** 86% PL, 9% CO, 5% MA  
**Abrasion** 200.000 Martindale  
**Fastness to light** 6  
**Flammability** EN1021 1 & 2

All colorways available

### Extrema AU

Category 2 | EX



**Textile mill** Flukso  
**Composition:** 63% Polyurethane - 29% COT 8% Polyester  
**Weight:** 480 g/m2  
**Abrasion:** 150.000 Martindale rubs, ISO 12947-2  
**Fastness to light:** 5/6, IISO 105-B02  
**Flammability** UNI 9175 classe 1 IM, EN 1021 part. 1-2, BS 5852 crib 5, BS 5852 Source 1, IMO 2010 FTP CODE | TB 117: 2013



### Lario

Category 2 | LAR



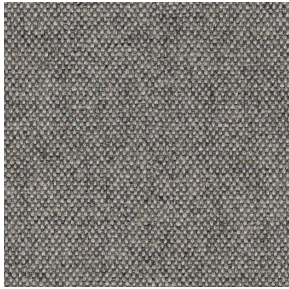
**By** Bulo  
**Composition** 42% cotton, 32% acrylic, 26%. polyester  
**Weight** 980 g/lm  
**Abrasion** 45.000 rubs  
**Pilling** 4 on 5.000 rubs  
**Flammability** TB 117 CALIFORNIA, BS 5852 Cigarette  
 With treatment: BS 5852, Match, CRIB5

All colorways available

## Upholstery Fabrics

### Mainline Flax

Category 2 | MLF



**Textile mill** Camira fabrics  
**Composition** 70% Pure New Wool, 30% Flax  
**Weight** 13 oz/sq yd  
**Abrasion** ≥100,000 double rubs, ASTM D4157 Wyzenbeek method  
**Fastness to light** 4, AATCC-16 (40 hours)  
**Flammability** California Technical Bulletin 117 - 2013, NFPA 260 + UFAC Class 1, BS 7176 Low Hazard, ASTM E84 Class 1 or A (Adhered)

All colorways available

### Mayoral

Category 2 | MAY



**By** Bulo  
**Composition** 38%VI 16%WO 13%CO 9%LI 8%PA 7%PC 5%SE 4%PL

All colorways available

### Perseide

Category 2 | PER



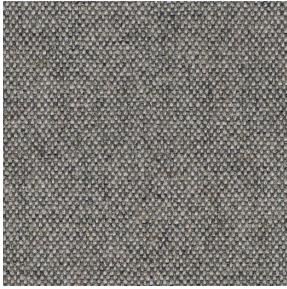
**By** Bulo  
**Composition** 35% virgin wool, 7% cotton, 35% acrylic, 23% polyester  
**Weight** 587 g/lm  
**Sustainability** Complies with EU ecolabel "The Flower"  
**Abrasion** 40.000 rubs  
**Pilling** 3-4 on 5.000 rubs  
**Flammability** TB 117 CALIFORNIA, BS 5852 Cigarette  
 With treatment: BS 5852 Match, 3-4 on 5.000 rubs CRIB5



## Upholstery Fabrics

### Renew

Category 2 | RN



**Textile mill** Keymer

**Composition** 76% pp, 10% pl, 8% ma, 6% co

**Rubbing** 35.000 Martindale

**Light fastness** 6

**Flammability** FR EN 1021 1&2,

**Environmental** Consists of 70% biodegradable polyolefin and is partially made from recycled yarn.

All colorways available

### Tresigallo

Category 2 | TRE



**By** Bulo

**Composition** PC 22% WV 22% PL 22% VI 14% CO 13% LI 7%

Bouclé/loop pile fabric

**Weight** 834 g/lm

**Abrasion** 30.000 Martindale ISO 12947-2

**Pilling** 4 5000 rubs ISO 12945-2

**Fastness to light** 5/6 ISO 105-B02

**Flammability** BS Cigarette - TB 117 California

### Blazer

Category 3 | BL



**Textile mill** Camira fabrics

**Composition** 100% Pure New Wool

**Weight** 13 1/2 oz/sq yd

**Abrasion** ≥75,000 double rubs, ASTM D4157 Wyzenbeek method

**Fastness to light** 4, AATCC-16 (40 hours)

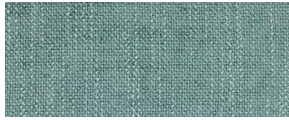
**Flammability** California Technical Bulletin 117 - 2013, NFPA 260 + UFAC Class 1, BS 7176 Low Hazard, ASTM E84 Class 1 or A (Adhered)

All colorways available

## Upholstery Fabrics

### Kent

Category 3 | KE



**Weight** 578 g/rm  
**Abrasion** 100 000

**Textile Mill** Aristide  
**Composition** 100%PES  
**Pilling** 4-5

### Atom



**Weight** 520 g/rm  
**Abrasion** 100 000

**Fastness to light** 6  
**Flammability** BS5852, ignition source 0 & 1 (cigarette & match), EN1021, EN1021-1 (cigarette) & EN1021-2 (match)

### Castle



**Weight** 453 g/rm  
**Abrasion** 40 000

**Aquaclean** Stain resistant. Odor resistant. Moisture resistant. Repels oil and water based spills. Integrated liquid-resistant barrier. Anti-bacterial and fungal growth resistance. Protection sealed in every fibre. Easy to clean. Greenguard Gold Certified.

### Hulk

### Lane

Category 3 | LA



**Weight** 406 g/rm  
**Abrasion** 50.000 rubs

**Textile mill** Aristide  
**Composition** 100%PES (velvet) **Pilling** 5  
**Fastness to light** 6/7 **Flammability** BS5852, ignition source 0 & 1 (cigarette & match), EN1021, EN1021-1 (cigarette) & EN1021-2 (match) **Crypton** technology stain and odor resistant, integrated non-porous moisture barrier, protection against bacteria and odor causing microbes, using silver ion technology, disinfectable, permanent and patented protection engineered on a molecular level, Greenguard Gold certified.

### Lobo

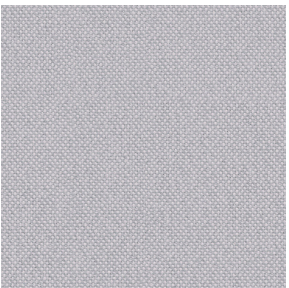


**Weight** 494 g/rm  
**Abrasion** 90.000 rubs

### Crystal

### Meld

Category 3 | ME



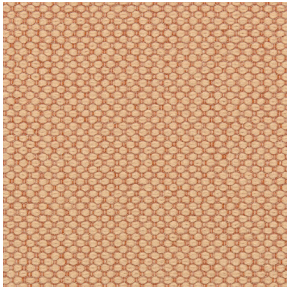
**Textile mill** Maharam  
**Composition** 68% Post-Consumer Recycled Polyester, 32% Polyester  
**Finish** Stain repellent  
**Weight** 500 g/lm  
**Abrasion** ASTM D4157, 100,000 double rubs Wyzenbeek  
**Fastness to light** AATCC 16E, 40+ hours  
**Flammability** AS/NZS 1530.3, AS/NZS 3837 Unadhered, ASTM E 84 Unadhered, CAL 117-2013, CAN ULC S102 Unadhered  
Environmental Greenguard Gold Certified, Greenguard Certified, GRS Certified Content, REACH Compliant, Contains Recycled Content, FR Free

All colorways available

## Upholstery Fabrics

### Merit

Category 3 | MR



All colorways available

**Textile mill** Maharam

**Composition** 76% Post-Consumer Recycled Polyester, 24% Polyester

**Weight** 17.1 oz/ly (500 gr/lm)

**Abrasion** ASTM D4157, 100,000 double rubs Wyzenbeek

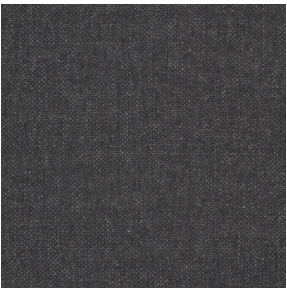
**Fastness to light** AATCC 16E, 40+ hours

**Flammability** AS/NZS 1530.3, AS/NZS 3837 Unadhered, ASTM E 84 Unadhered  
BS 476 Unadhered\*, BS 5852 Crib 5\*, CAL 117-2013, CAN ULC S102 Unadhered  
EN 1021-1\*, EN 1021-2\*, EN 13501 Unadhered\*, GB/T 17591\*, ISO 5660 Unadhered  
NFPA 260, SN 198 898\*, \*passes with additional treatment

**Environmental**, Greenguard Gold Certified, GRS Certified Content, REACH  
Compliant, Contains Recycled Content, FR Free

### Re-wool

Category 3 | RW



All colorways available

**Textile mill** Kvadrat

**Composition** 5% New wool (worsted), 45% Recycled wool, 10% Nylon

**Weight** 540 g/lin.m

**Sustainability** Complies with EU ecolabel "The Flower"

**Abrasion** 100.000 Martindale

**Pilling** 4

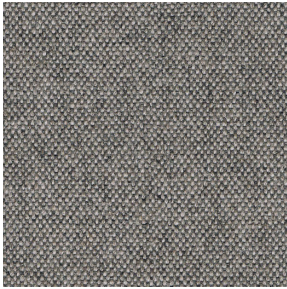
**Fastness to light** 7

**Flammability** BS 5852 Crib 5 with treatment, BS 5852 ignition source 3, BS 5852 part 1,  
EN 1021-1/2, NF D 60 013, UNI 9175 1IM, US Cal. Bull. 117-2013, ÖNORM B1/ Q1, AS/  
NZS 3837 Class 2

## Upholstery Fabrics

### Arco

Category 4 | AR



All colorways available

**Textile mill** Rohi

**Composition** 95% virgin wool 5% polyamide

**Weight** 700 g/m<sup>2</sup> - 980 g/lm

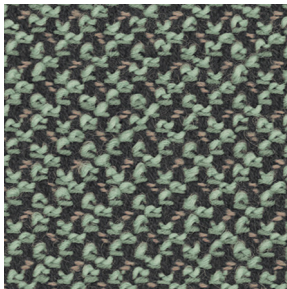
**Abrasion** 70.000 rubs ISO 12947-2

**Fastness to light** ≥ 5 ISO 105-B02 (yarn dyed)

**Flammability** wool is naturally flame retardant. Rohi wool fabrics satisfy the following standards with no additional flame retardant finish: CAL TB 117 - 2013, DIN EN 1021-1/ -2, BS 5852 part 1: 1979, UNI 9175 1 IM, IMO 2014/90/EU, Marine Equipment Directive (MED)

### Cleo

Category 4 | CL



All colorways available

**Textile mill** Rohi

**Composition** 95% virgin wool 5% polyamide

**Weight** 690 g/m<sup>2</sup> - 970 g/lm

**Sustainability** natural, renewable material, IWTO Guidelines for Wool Sheep Welfare, RAL DE-UZ 117 Att. 3b for "Blue Angel", without flame retardant AB 2998 (US export standard), REACH (EU export standard)

**Abrasion** 70.000 rubs ISO 12947-2

**Pilling** ≥ 4-5 ISO 12945-2

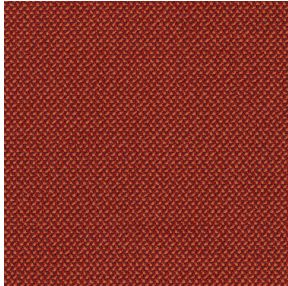
**Fastness to light** ≥ 5 ISO 105-B02 (yarn dyed)

**Flammability** wool is naturally flame retardant, rohi wool fabrics satisfy the following standards, with no additional flame retardant finish: CAL TB 117 – 2013, DIN EN 1021-1/ -2, BS 5852 part 1: 1979, UNI 9175 1 IM, ÖNORM B1/Q1, IMO 2014/90/EU Marine Equipment Directive (MED) NZS 3837 Class 2. With additional flame retardant finish: BS 5852: 2006 Crib5, DIN 4102-1 B2, DIN EN 13501-1 E, FAR 25.853 12 sec. vertical, BKZ 5.3 SN 198898

## Upholstery Fabrics

### Credo

Category 4 | CR



**Textile mill** Rohi

**Composition** 95% New Wool, 5% PA (polyamide)

**Weight** 610 g/m<sup>2</sup> - 870 g/lfm

**Abrasion** 100.000 rubs, ISO 12947-2

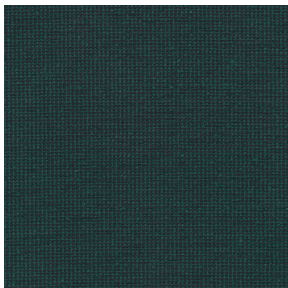
**Pilling** ≥ 4-5, ISO 12945-2

**Fastness to light** ≥ 5, ISO 105-B02

**Flammability** FAR 25.853 (12 sec. vertical), CAL TB 117 - 2013, DIN 4102-1 B2, DIN EN 13501-1, DIN EN 1021 -1 und -2, BS 5852:1979 (part1), BS 5852:2006 (part2) Crib5, BKZ: 5.3 SN 198898, UNI 9175 (1 IM), NF P92 503-507 M2, IMO: 2014/90/EU Marine Equipment Directive

### Encircle

Category 4 | EN



**Textile mill** kvadrat

**Composition** 100% Trevira CS

**Weight** 560 g/m<sup>2</sup> (18.06 oz/sq ft)

**Sustainability** Greenguard Gold, HPD, EPD

**Abrasion** 80,000 Martindale

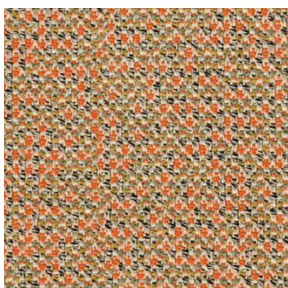
**Pilling** 4 (ISO 1-5)

**Fastness to light** 6

**Flammability** BS 5852 Crib 5 • AS/NZS 3837 class 1 • DIN 4102 B1 • IMO FTP Code 2010 Part 8 • NF P 92 507 M1 • NFPA 701 • ÖNORM B1/Q1 • NF D 60 013 • SN 198 898 5.2 • EN 1021-1/2 • UNI 9175 1IM • US Cal. Bull. 117-2013 • ASTM E84 Class A Unadhered • BS 5867 part 2 type B • EN 13501-1, B-s1, d0 • CAN ULC S102 • CAN ULC S109

### Mica

Category 4 | MI



**Textile mill** Rohi

**Composition** 95% virgin wool 5% polyamide **Weight** 600 g/m<sup>2</sup> - 840 g/lfm

**Abrasion** ≥ 70.000 rubs ISO 12947-2 **Pilling** ≥ 4-5 ISO 12945-2 **Fastness to light** ≥ 5 ISO 105-B02 (yarn dyed)

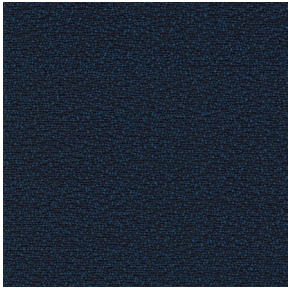
**Flammability** wool is naturally flame retardant, rohi wool fabrics satisfy the following standards with no additional flame retardant finish: CAL TB 117 – 2013 DIN EN 1021-1/ -2, BS 5852 part 1: 1979, UNI 9175 1 IM, ÖNORM B1/Q1, IMO 2014/90/ EU Marine Equipment Directive (MED). With additional flame retardant finish: BS 5852: 2006 Crib5, DIN 4102-1 B2, DIN EN 13501-1 E, FAR 25.853 12 sec. vertical



## Upholstery Fabrics

### Shake

Category 4 | SH



**Textile mill** Rohi

**Composition** 95% WV 5% PA

**Weight** 440 g/m<sup>2</sup> - 660 g/lm

**Abrasion** ≥ 70.000 rubs ISO 12947-2

**Pilling** ≥ 4-5, ISO 12945-2

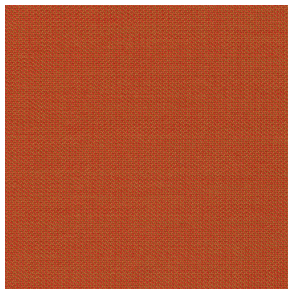
**Fastness to light** ≥ 5, ISO 105-B02 (yarn dyed)

**Flammability** CAL TB 117 - 2013, DIN EN 1021 -1 / -2, BS 5852:1979 (part1), UNI 9175 (1 IM), ÖNORM B1/Q1, IMO 2014/90/EU Marine Equipment Directive.

All colorways available

### Topia

Category 4 | TP



**Textile mill** Rohi

**Composition** 95% Wool, 5% PA

**Weight** 440 g/m<sup>2</sup> - 660 g/lfm

**Abrasion** 50.000 rubs, ISO 12947-2

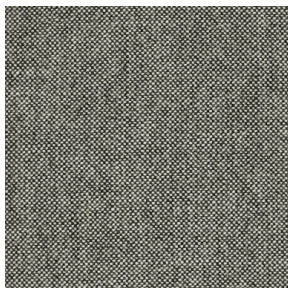
**Pilling** ≥ 4-5, ISO 12945-2

**Fastness to light** ≥ 5, ISO 105-B02

**Flammability** FAR 25.853 (12 Sek. vertikal), CAL TB 117 - 2013, DIN 4102-1 B2, DIN EN 13501-1, DIN EN 1021 -1 and -2, BS 5852:1979 (part1), BS 5852:2006 (part2) Crib5, BKZ: 5.3 SN 198898, UNI 9175 (1 IM), IMO: 2014/90/EU Marine Equipment Directive, Train: EN 45545-2 R21 ISO 5660-1 (HL3)

### Hallingdal 65

Category 5 | HA



**Textile mill** Kvadrat

**Composition** 70% New wool, 30% Viscose

**Weight** 795 g/lin.m

**Sustainability** Complies with EU ecolabel "The Flower"

**Abrasion** 100.000 Martindale

**Pilling** 3-4

**Fastness to light** 7

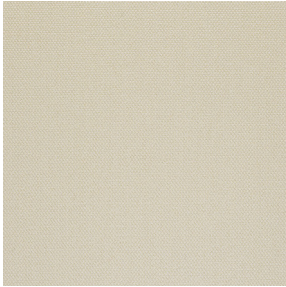
**Flammability** AS/NZS 1530.3, BS 5852 Crib 5, BS 5852 part 1, EN 1021-1/2, IMO FTP Code 2010 Part 8, NF D 60 013, NFPA 260, SN 198 898 5.3 with treatment, UNI 9175 1IM, US Cal. Bull. 117-2013, ÖNORM B1/ Q1, BS 5852 ignition source 3

All colorways available

## Upholstery Fabrics

### Steelcut 3

Category 5 | CT

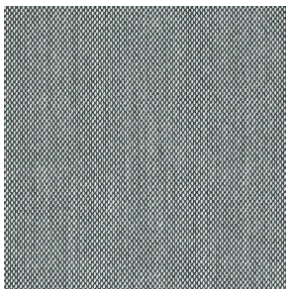


All colorways available

**Textile mill** Kvadrat**Composition** 90% New wool (worsted), 10% Nylon**Weight** 825 g/lin.m**Sustainability** Complies with EU ecolabel "The Flower"**Abrasion** 100.000 Martindale**Pilling** 3-4**Fastness to light** 6**Flammability** AS/NZS 3837, class 2, BS 5852 part 1, EN 1021-1/2, IMO FTP Code 2010 Part 8, NF D 60 013, SN 198 898 5.3 with treatment, UNI 9175 1IM, US Cal. Bull. 117-2013, ÖNORM B1/ Q1, BS 5852 Crib 5 with treatment, NFPA 260, AS/NZS 1530.3

### Steelcut Trio 3

Category 5 | TR

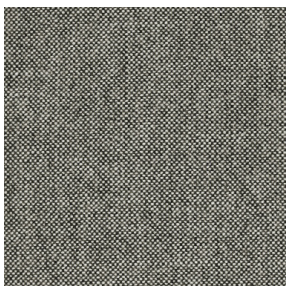


All colorways available

**Textile mill** Kvadrat**Composition** 90% New wool (worsted), 10% Nylon**Weight** 770 g/lin.m**Sustainability** Complies with EU ecolabel "The Flower"**Abrasion** 100.000 Martindale**Pilling** 4**Fastness to light** 5**Flammability** AS/NZS 3837, class 2, BS 5852 part 1, EN 1021-1/2, IMO FTP Code 2010 Part 8, NF D 60 013, NFPA 260, SN 198 898 5.3 with treatment, UNI 9175 1IM, US Cal. Bull. 117-2013, ÖNORM B1/ Q1, BS 5852 Crib 5 with treatment, AS/NZS 1530.3, BS 5852 ignition source 3

### Vidar 4

Category 5 | VI



All colorways available

**Textile mill** Kvadrat**Composition** 94% new wool 6% nylon**Weight** 770 g/m2 (24.84 oz/sq ft)**Sustainability** Complies with EU ecolabel "The Flower"**Abrasion** 100,000 Martindale**Pilling** 4 (ISO 1-5)**Fastness to light** 7**Flammability** BS 5852 crib 5 with treatment • BS 5852 part 1 • IMO FTP Code 2010 Part 8 • NF D 60 013 • NFPA 260 • UNI 9175 1IM • US Cal. Bull. 117-2013 • EN 1021-1/2 • AS/NZS 3837 class 2 • GB 50222 B1 with treatment (Chinese) • SN 198 898 5.3 with treatment • IMO FTP Code 2010 Part 7 with treatment • NFPA 701 with treatment

## Upholstery Fabrics

---

### Judith

Category 6 | JUDCR



**Textile mill** Pierre Frey

**Composition** 79% Wool - 21% Cotton Bouclé/loop pile fabric **Weight** 1181 g/lm **Abrasion** > 50.000 Martindale **Flammability** BS5852 Cigarette & Match test - BS5852 Cigarette test - CRIB 5, in conjunction with suitable combustion modified foam - NFPA 260 - Class 1 - EN1021-1-20

### Louison

Category 7 | LOUCR



**Textile mill** Pierre Frey

**Composition** 41% Wool - 39% Alpaca - 17% Cotton - 3% Acrylic

**Weight** 1349 g / ml

Bouclé/loop pile fabric

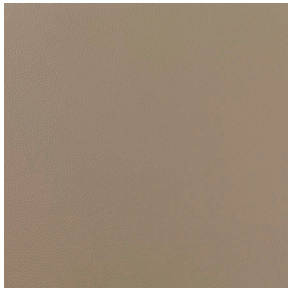
**Abrasion** > 50.000 Martindale

**Flammability** BS5852 Cigarette & Match test - BS5852 Cigarette test - CRIB 5, in conjunction with suitable combustion modified foam - NFPA 260 - Class 1 - EN1021-1-20

## Upholstery Leather

---

**Sand grey**



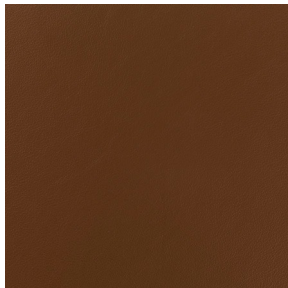
**Dark green**



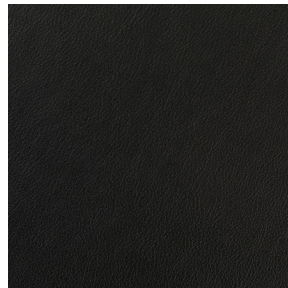
**Dark brown**



**Tobacco**



**Black**



**Origin** European bullhides

**Thickness** 1.0/1.2 mm

**Surface** Pigmented nappa leather

**Flammability** BS 5852 PART 1 (ignition source 0 and 1)

EN 1021-1 and 1021-2

CAL TB 117:2013

Leather is a natural material with natural variation in color and surface structure. No two are alike. A variety of markings like healed scars and abrasions may be visible and are not considered defects but are characteristics of genuine leather. On inquiry and at a surcharge, other leather colors than our standard colors may be available.

### COM / COL

---

Customer's own material/leather

Customers can supply their own fabric or own leather if preceded by consultation with Bulo or your Bulo partner.

Bulo reserves the right to reject the COM/COL we find unsuitable.

Warranty conditions on COM/COL available on request.

Fabric requirement for 1 Monica chair: l. 2,8 m/111" x 1,4 m/55"

Leather requirement available on request, depending on type and quantity of chairs