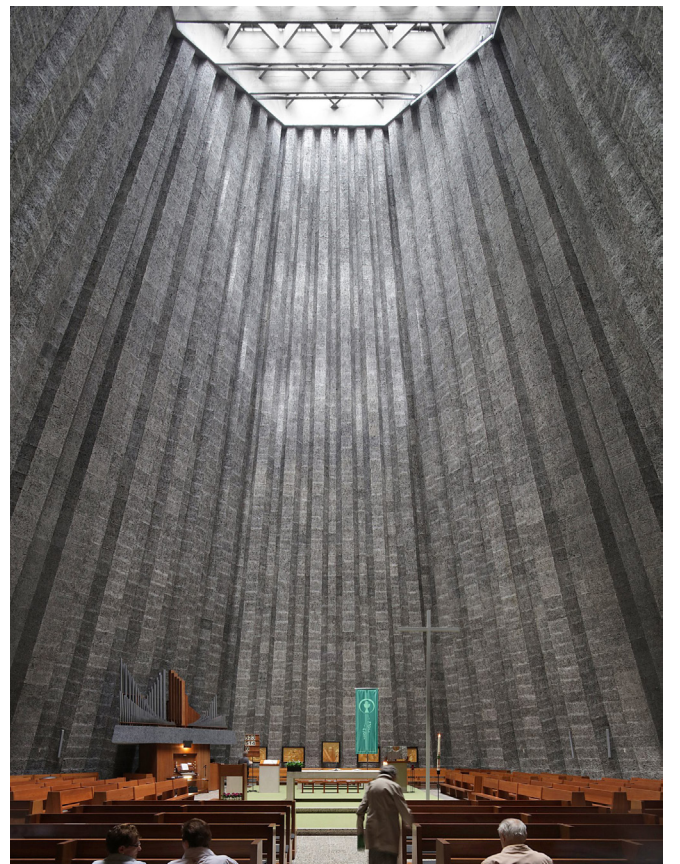
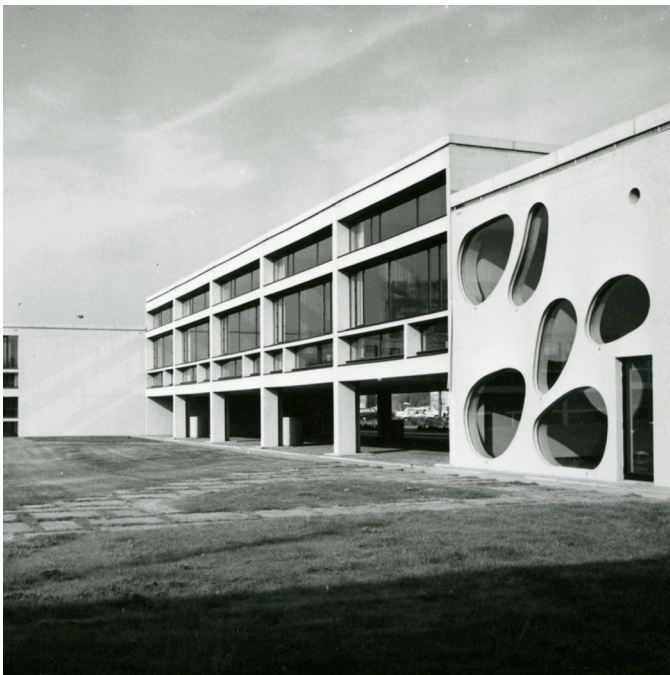


SL

by Léon Stynen

Bulo





Léon Stynen

Léon Stynen (1899-1990), son of a sculptor and a decorative artist, studied architecture at the Antwerp Academy. His contemporaries included Bourgeois, De Koninck, Hoste, Van Doesburg, Gropius and Le Corbusier - who was a main source of inspiration and a dear friend. Stynen's work as an architect spans more than half a century of Belgian architectural history, with a vast number of successful and multi-faceted projects. Amongst them are deSingel International Art Center that opened in 1980. Stynen was also very active in education and had a role in defining the architectural studies in Belgium.

Léon Stynen was one of Belgium's most important and influential architects and educators. Working from 1920's to 1970, his masterworks still stand in Flanders today, reminding us of the development of Europe's Modern Architectural Style.



SL

The SL58 Chair was designed for the 1958 World Expo in Brussels - the first major world's fair after World War II. The theme of Expo 58 was "Evaluation of the world, for a more humane world". The exhibits explored technical and scientific progress as well as debates on the ethical use of atomic power. The fair began with a call for world peace, and social and economic progress. This post-war period is well known for its architectural departures from past constraints, and in the furniture industry as a period of exploration with new materials, simple forms, and a new, modern way of living.

Bulo re-issued the most iconic and popular chair in Belgium, the SL58 chair, in 2018, to commemorate "the year of Léon Stynen". Working closely with the Stynen family, adhering to design tolerances and details, Bulo further expanded the SL Collection to include a padded seat, upholstered covers, bar stools, a desk chair on castors and a polypropylene version. SL is Bulo's most iconic modern classic collection.

SL58**4 legs**

The molded plywood shell is composed out of FSC certified wood.

The shell consists of 8 layers of beech veneer (including 2 layers of AA-quality beech veneer) and is attached to the metal frame by means of black bolts and cap nuts.

Upholstery uses fire-retardant foam, CRIB5 (15 mm on seat, 45 kg / m3 density)

The water-based lacquers used meet the strictest european norms.

Steel is certified with ISO 9001:2015, ISO 14001:2015

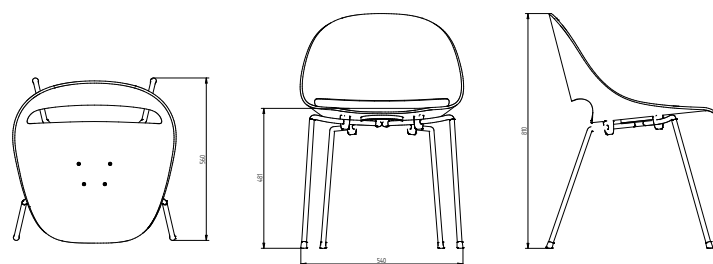
For intensive use, it is recommended to use a chrome or champagne base.

SL58 on 4 legs

w	540 mm	± 21"
d	560 mm	± 22"
h	810 mm	± 32"

seat height

481 mm	± 19"
--------	-------



SL58**High bar stool**

The molded plywood shell is composed out of FSC certified wood.

The shell consists of 8 layers of beech veneer (including 2 layers of AA-quality beech veneer) and is attached to the metal frame by means of black bolts and cap nuts.

Upholstery uses fire-retardant foam, CRIB5 (15 mm on seat, 45 kg / m3 density)

The water-based lacquers used meet the strictest european norms.

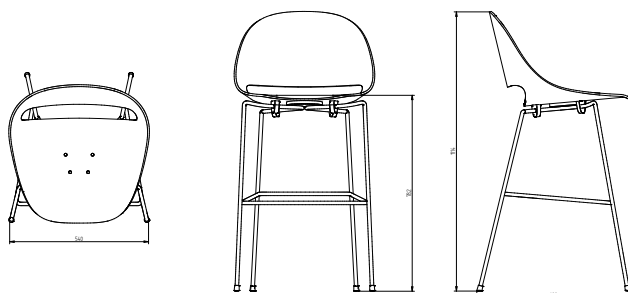
Steel is certified with ISO 9001:2015, ISO 14001:2015

SL58 high bar stool

w	540 mm	± 21"
d	600 mm	± 23.5"
h	1114 mm	± 44"

seat height

782 mm	± 31"
--------	-------



SL58**Counter height stool**

The molded plywood shell is composed out of FSC certified wood.

The shell consists of 8 layers of beech veneer (including 2 layers of AA-quality beech veneer) and is attached to the metal frame by means of black bolts and cap nuts.

Upholstery uses fire-retardant foam, CRIB5 (15 mm on seat, 45 kg / m3 density)

The water-based lacquers used meet the strictest european norms.

Steel is certified with ISO 9001:2015, ISO 14001:2015

SL58 counter height stool

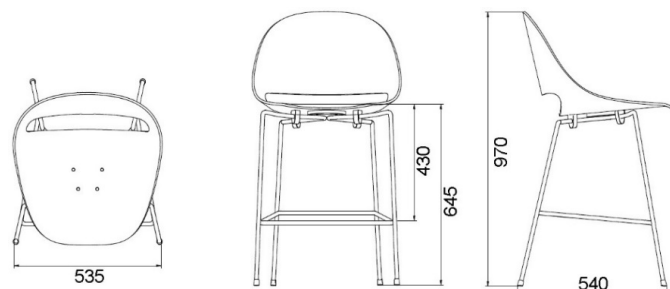
w 535 mm $\pm 21''$

d 540 mm $\pm 21''$

h 970 mm $\pm 38''$

seat height

645 mm $\pm 25.5''$



SL58**Lounge chair**

The molded plywood shell is composed out of FSC certified wood.

The shell consists of 8 layers of beech veneer (including 2 layers of AA-quality beech veneer) and is attached to the metal frame by means of black bolts and cap nuts.

Upholstery uses fire-retardant foam, CRIB5 (15 mm on seat, 45 kg / m3 density)

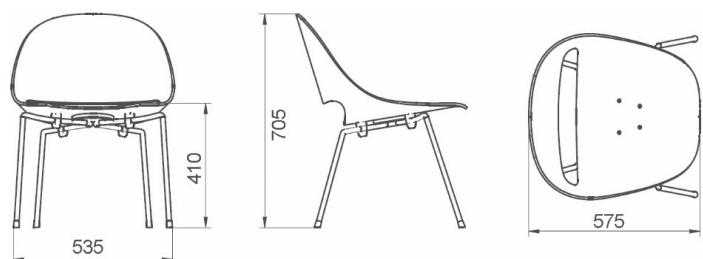
The water-based lacquers used meet the strictest european norms.

Steel is certified with ISO 9001:2015, ISO 14001:2015

SL58 lounge chair

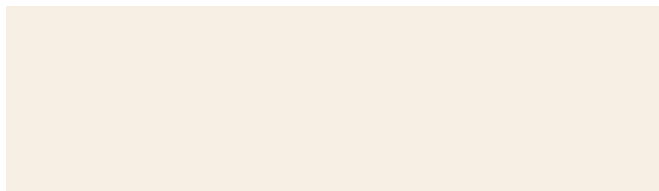
w	535 mm	± 21"
d	575 mm	± 22.5"
h	705 mm	± 28"

seat height	
410 mm	± 16"



Materials

Base



Lily white powdercoated (only for chair on 4 legs) 01



Black powdercoated 04



Champagne (only for chair on 4 legs) 17



Chrome CH

Plywood Shell



Natural beech



stained in santos rosewood color

Upholstery see page ... >

SLL18**4 legs**

In honor of the 60th anniversary of the SL58, Bulo developed the SLL18, a polypropylene version of the original design by Léon Stynen. Available in 6 modern colors: nude, white, grey-green, petrol, black and orange. Also available with upholstered shell. The frame comes in an elegant matte chrome and black lacquer. Unupholstered stackable till 4 pieces.

Monocolor (base and shell): white, grey-green or nude

SLL18 on 4 legs

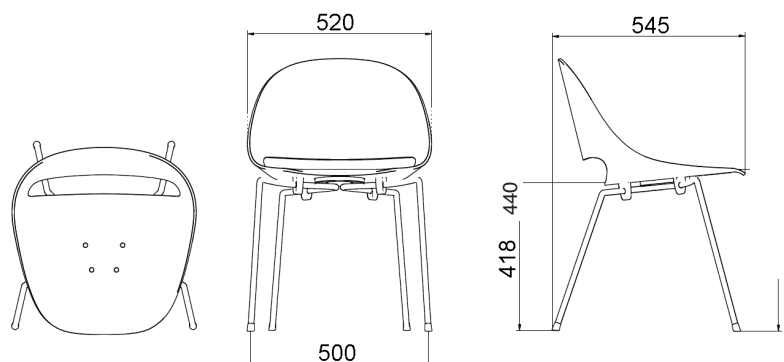
w 520 mm / 20.5"

d 545 mm / 21.5"

h 780 mm / 31"

seat height

440 mm / 17"



Steel, certified, ISO 9001:2015, 14001:2015

SLL18**Trestle 4-star base on glides or castors**

Polypropylene shell. Available in 6 modern colors: nude, white, grey-green, petrol, black and orange.
Also available with upholstered shell. Black 4-star trestle base on black universal pvc castors diam. 65 mm / 2.5" or on anti-skid glides.

SLL18 on 4-star trestle base

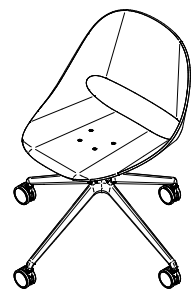
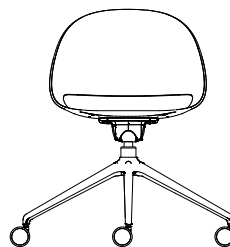
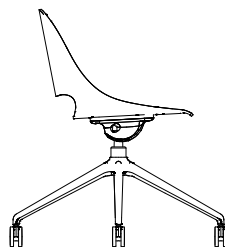
w 530 mm / 21"

d 530 mm / 21"

h 770 mm / 30"

seat height

430 mm / 17"



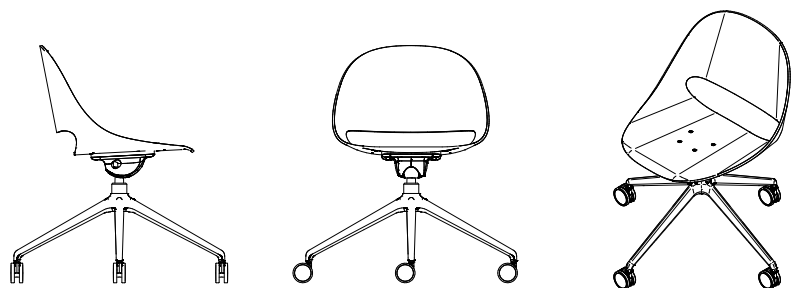
SLL18**Trestle 5-star base on castors**

Polypropylene shell. Available in 6 modern colors: nude, white, grey-green, petrol, black and orange. Also available with upholstered shell. Black 5-star trestle base on black universal pvc castors diam. 65 mm / 2.5".

SLL18 on 5-star trestle base

w 670 mm / 26"
d 670 mm / 26"
h 730-840 mm / 29-33"

seat height
 410-520 mm / 16-20.5"



SLL18**High bar stool**

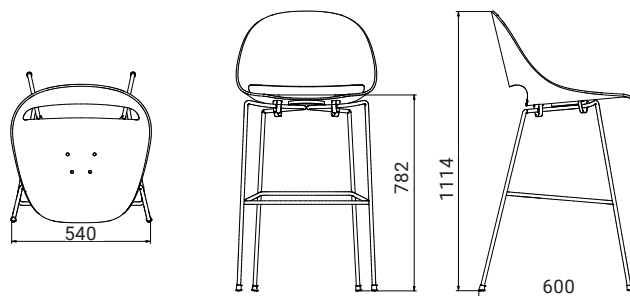
Polypropylene shell. Available in 6 modern colors: nude, white, grey-green, petrol, black and orange. Also available with upholstered shell.

The water-based lacquers used meet the strictest european norms.
Steel is certified with ISO 9001:2015, ISO 14001:2015

SLL18 high bar stool

w 540 mm / ± 21"
d 600 mm / ± 23.5"
h 1090 mm / ± 43"

seat height
782 mm / ± 31"



SLL18**Counter height stool**

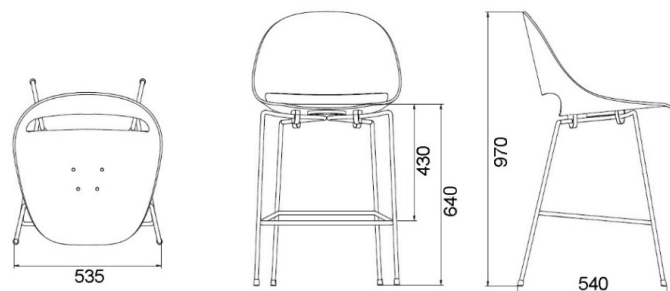
Polypropylene shell. Available in 6 modern colors: nude, white, grey-green, petrol, black and orange. Also available with upholstered shell.

The water-based lacquers used meet the strictest european norms.
Steel is certified with ISO 9001:2015, ISO 14001:2015

SLL18 counter height stool

w 535 mm / ± 21"
d 540 mm / ± 21"
h 950 mm / ± 37.5"

seat height
640 mm / ± 25"



SL

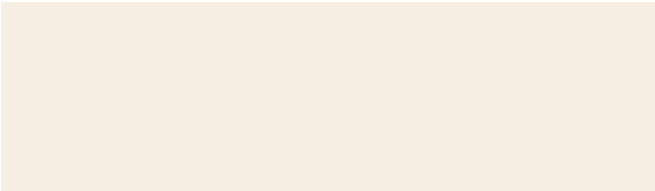
Universal cushion for SLL18 and SL58 chair



w. 400 x d. 360 mm / 16" x 14"
upholstered

Materials

Base



Lily white powdercoated (only for chair on 4 legs) 01



Black powdercoated 04



Grey-green GG



Nude NU

Plywood Shell



Natural Beech

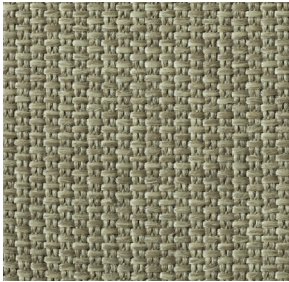


stained in santos rosewood color

Upholstery Fabrics

Cico

Category 1 | CI

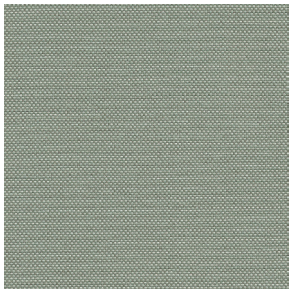


All colorways available

By Bulo
Composition 100% Polypropylene
Weight 1.063 g/lm
Abrasion 30.000 rubs
Fastness to light 7/8
Flammability TB 177 CALIFORNIA, BS 5852 Cigarette, BS Match - with treatment
Pilling 4-5 on 5.000 rubs
Sustainability OEKO-TEX standard 100, GREENGUARD gold

Quest

Category 1 | QE



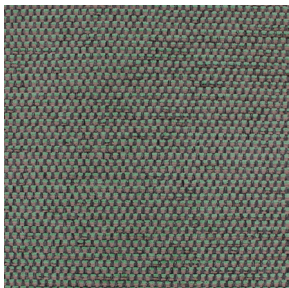
All colorways available

Textile mill Camira
Composition 100% post-consumer recycled polyester including 75% SEAQUAL® YARN
Weight 330g/m2 ±5%
Abrasion Heavy duty / 10 year guarantee. Independently certified to ≥100,000 Martindale cycles
Light resistance 4-6 (ISO 105 - B02)
Flammability EN 1021 - 1 (cigarette), EN 1021 - 2 (match), BS 7176 Low Hazard UNI 9175 Classe 1 IM, BS 476 Part 7 Class 1Y (Adhered), EN 13501-1 Adhered Class B, s1, d0, EN 13501-1 Un-adhered Class B, s1, d0, BS 5852 Ignition Source 5 with EnviroFlam5, BS 7176 Medium Hazard with EnviroFlam5, IMO FTP Code (Part 8) with EnviroFlam5

Camira Fabrics partnered with the SEAQUAL INITIATIVE to combat marine plastic pollution. SEAQUAL® YARN is woven entirely from post-consumer recycled plastic. Quest is a balanced hopsack weave enhanced by the discat-dyed SEAQUAL® YARN.

César

Category 2 | CE



All colorways available

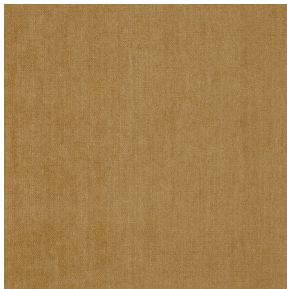
Textile mill Aristide
Composition 100% PES
Weight 565 gr/rm
Abrasion Martindale 60,000 rubs (BS 5690)
Light resistance 4
Flammability BS5852, ignition souce 0 & 1 (cigarette & match), EN1021, EN1021-1 (cigarette) & EN1021-2 (match)

Aquaclean Aquaclean treatment system covers every single fiber with an invisible molecular coating. This avoids dirt to penetrate the fibers, which helps to maintain the fabric and prolong the life of your sofa cover. Use just water to clean occasional stains like wine, coffee and food.

Upholstery Fabrics

Comeback

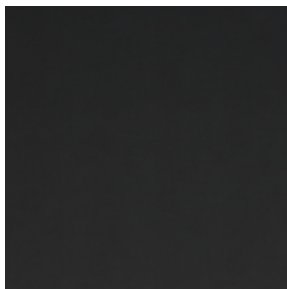
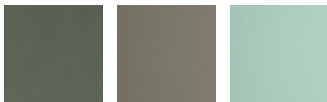
Category 2 | CO

**Textile Mill** Keymer**Composition** 86% PL, 9% CO, 5% MA**Abrasion** 200.000 Martindale**Fastness to light** 6**Flammability** EN1021 1 & 2

All colorways available

Extrema AU

Category 2 | EX

**Textile mill** Flukso**Composition:** 63% Polyurethane - 29% COT 8% Polyester**Weight:** 480 g/m2**Abrasion:** 150.000 Martindale rubs, ISO 12947-2**Fastness to light:** 5/6, IISO 105-B02**Flammability** UNI 9175 classe 1 IM, EN 1021 part. 1-2, BS 5852 crib 5, BS 5852 Source 1, IMO 2010 FTP CODE | TB 117: 2013

Lario

Category 2 | LAR

**By** Bulo**Composition** 42% cotton, 32% acrylic, 26%. polyester**Weight** 980 g/lm**Abrasion** 45.000 rubs**Pilling** 4 on 5.000 rubs**Flammability** TB 117 CALIFORNIA, BS 5852 Cigarette

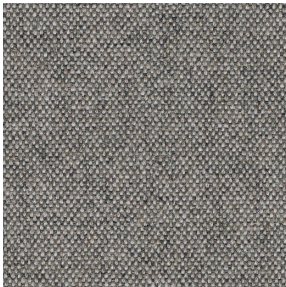
With treatment: BS 5852, Match, CRIB5

All colorways available

Upholstery Fabrics

Mainline Flax

Category 2 | MLF



All colorways available

Textile mill Camira fabrics
Composition 70% Pure New Wool, 30% Flax
Weight 13 oz/sq yd
Abrasion ≥100,000 double rubs, ASTM D4157 Wyzenbeek method
Fastness to light 4, AATCC-16 (40 hours)
Flammability California Technical Bulletin 117 - 2013, NFPA 260 + UFAC Class 1, BS 7176 Low Hazard, ASTM E84 Class 1 or A (Adhered)

Mayoral

Category 2 | MAY



All colorways available

By Bulo
Composition 38%VI 16%WO 13%CO 9%LI 8%PA 7%PC 5%SE 4%PL

Perseide

Category 2 | PER

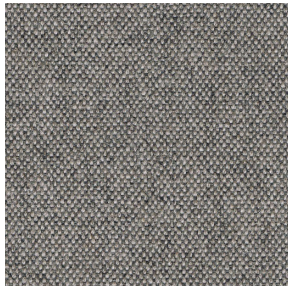


By Bulo
Composition 35% virgin wool, 7% cotton, 35% acrylic, 23%. polyester
Weight 587 g/lm
Sustainability Complies with EU ecolabel “The Flower”
Abrasion 40.000 rubs
Pilling 3-4 on 5.000 rubs
Flammability TB 117 CALIFORNIA, BS 5852 Cigarette
With treatment: BS 5852 Match, 3-4 on 5.000 rubs CRIB5

Upholstery Fabrics

Renew

Category 2 | RN



All colorways available

Textile mill Keymer
Composition 76% pp, 10% pl, 8% ma, 6% co
Rubbing 35.000 Martindale
Light fastness 6
Flammability FR EN 1021 1&2,
Environmental Consists of 70% biodegradable polyolefin and is partially made from recycled yarn.

Tresigallo

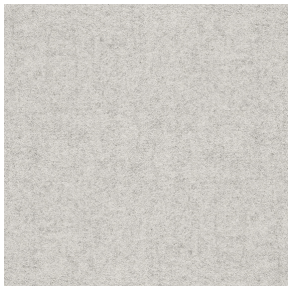
Category 2 | TRE



By Bulo
Composition PC 22% WV 22% PL 22% VI 14% CO 13% LI 7%
 Bouclé/loop pile fabric
Weight 834 g/lm
Abrasion 30.000 Martindale ISO 12947-2
Pilling 4 5000 rubs ISO 12945-2
Fastness to light 5/6 ISO 105-B02
Flammability BS Cigarette - TB 117 California

Blazer



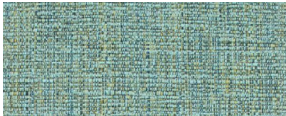


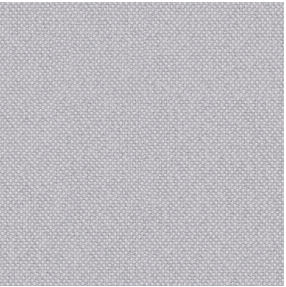
Category 3 | BL



All colorways available

Textile mill Camira fabrics
Composition 100% Pure New Wool
Weight 13 1/2 oz/sq yd
Abrasion ≥75,000 double rubs, ASTM D4157 Wyzenbeek method
Fastness to light 4, AATCC-16 (40 hours)
Flammability California Technical Bulletin 117 - 2013, NFPA 260 + UFAC Class 1, BS 7176 Low Hazard, ASTM E84 Class 1 or A (Adhered)

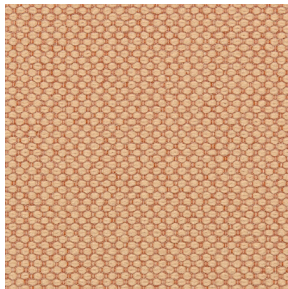
Upholstery Fabrics

Kent		Category 3 KE
	Weight 578 g/rm Abrasion 100 000	Textile Mill Aristide Composition 100%PES Pilling 4-5 Fastness to light 6 Flammability BS5852, ignition source 0 & 1 (cigarette & match), EN1021, EN1021-1 (cigarette) & EN1021-2 (match) Aquaclean Stain resistant. Odor resistant. Moisture resistant. Repels oil and water based spills. Integrated liquid-resistant barrier. Anti-bacterial and fungal growth resistance. Protection sealed in every fibre. Easy to clean. Greenguard Gold Certified.
Atom		
	Weight 520 g/rm Abrasion 100 000	
Castle		
	Weight 453 g/rm Abrasion 40 000	
Hulk		
Lane		Category 3 LA
	Weight 406 g/rm Abrasion 50.000 rubs	Textile mill Aristide Composition 100%PES (velvet) Pilling 5 Fastness to light 6/7 Flammability BS5852, ignition source 0 & 1 (cigarette & match), EN1021, EN1021-1 (cigarette) & EN1021-2 (match) Crypton technology stain and odor resistant, integrated non-porous moisture barrier, protection against bacteria and odor causing microbes, using silver ion technology, disinfectable, permanent and patented protection engineered on a molecular level, Greenguard Gold certified.
Lobo		
	Weight 494 g/rm Abrasion 90.000 rubs	
Crystal		
Meld		Category 3 ME
	Textile mill Maharam Composition 68% Post-Consumer Recycled Polyester, 32% Polyester Finish Stain repellent Weight 500 g/lm Abrasion ASTM D4157, 100,000 double rubs Wyzenbeek Fastness to light AATCC 16E, 40+ hours Flammability AS/NZS 1530.3, AS/NZS 3837 Unadhered, ASTM E 84 Unadhered, CAL 117-2013, CAN ULC S102 Unadhered Environmental Greenguard Gold Certified, Greenguard Certified, GRS Certified Content, REACH Compliant, Contains Recycled Content, FR Free	
All colorways available		

Upholstery Fabrics

Merit

Category 3 | MR

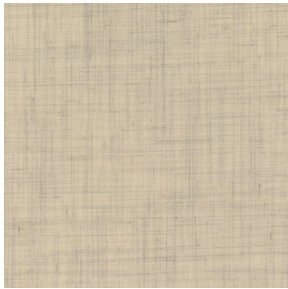


All colorways available

Textile mill Maharam
Composition 76% Post-Consumer Recycled Polyester, 24% Polyester
Weight 17.1 oz/ly (500 gr/lm)
Abrasion ASTM D4157, 100,000 double rubs Wyzenbeek
Fastness to light AATCC 16E, 40+ hours
Flammability AS/NZS 1530.3, AS/NZS 3837 Unadhered, ASTM E 84 Unadhered BS 476 Unadhered*, BS 5852 Crib 5*, CAL 117-2013, CAN ULC S102 Unadhered EN 1021-1*, EN 1021-2*, EN 13501 Unadhered*, GB/T 17591*, ISO 5660 Unadhered NFPA 260, SN 198 898*, *passes with additional treatment
Environmental, Greenguard Gold Certified, GRS Certified Content, REACH Compliant, Contains Recycled Content, FR Free

Remix 3

Category 3 | RE

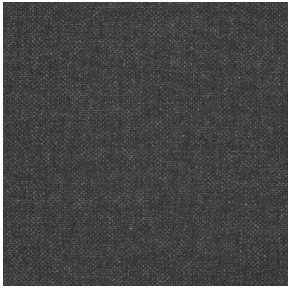


All colorways available

Textile mill Kvadrat
Composition 90% new wool worsted 10% nylon
Weight 420 g/lm
Abrasion 100.000 Martindale
Pilling 4
Fastness to light 6
Flammability AS/NZS 1530.3, BS 5852 part 1, IMO FTP Code 2010 Part 8, NF D 60 013, NFPA 260, UNI 9175 1IM, US Cal. Bull. 117-2013, EN 1021-1/2, AS/NZS 3837 class 2, ÖNORM B1/Q1, ASTM E84 Class A Unadhered, ASTM E84 Class A Adhered

Re-wool

Category 3 | RW



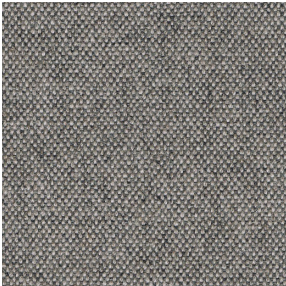
All colorways available

Textile mill Kvadrat
Composition 5% New wool (worsted), 45% Recycled wool, 10% Nylon
Weight 540 g/lin.m
Sustainability Complies with EU ecolabel “The Flower”
Abrasion 100.000 Martindale
Pilling 4
Fastness to light 7
Flammability BS 5852 Crib 5 with treatment, BS 5852 ignition source 3, BS 5852 part 1, EN 1021-1/2, NF D 60 013, UNI 9175 1IM, US Cal. Bull. 117-2013, ÖNORM B1/ Q1, AS/ NZS 3837 Class 2

Upholstery Fabrics

Arco

Category 4 | AR



All colorways available

Textile mill Rohi
Composition 95% virgin wool 5% polyamide
Weight 700 g/m2 - 980 g/lm
Abrasion 70.000 rubs ISO 12947-2
Fastness to light ≥ 5 ISO 105-B02 (yarn dyed)
Flammability wool is naturally flame retardant. Rohi wool fabrics satisfy the following standards with no additional flame retardant finish: CAL TB 117 - 2013, DIN EN 1021-1/ -2, BS 5852 part 1: 1979, UNI 9175 1 IM, IMO 2014/90/EU, Marine Equipment Directive (MED)

Canvas 2

Category 4 | CA



All colorways available

Textile mill Kvadrat
Composition 90% New wool (worsted), 10% Nylon
Weight 480 g/lin.m
Abrasion 100.000 Martindale
Pilling 4
Fastness to light 6
Flammability AS/NZS 1530.3, BS 5852 part 1, EN 1021-1/2, IMO FTP Code 2010 Part 8, NF D 60 013, NFPA 260, SN 198 898 5.3 with treatment, UNI 9175 1IM, US Cal. Bull. 117-2013, ÖNORM B1/ Q1, BS 5852 ignition source 3, BS 5852 Crib 5 with treatment

Cleo

Category 4 | CL



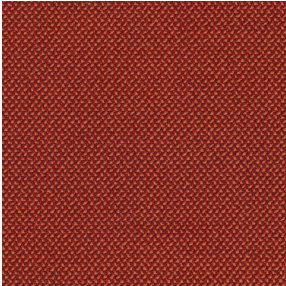
All colorways available

Textile mill Rohi
Composition 95% virgin wool 5% polyamide
Weight 690 g/m2 - 970 g/lm
Sustainability natural, renewable material, IWTO Guidelines for Wool Sheep Welfare, RAL DE-UZ 117 Att. 3b for "Blue Angel", without flame retardant AB 2998 (US export standard), REACH (EU export standard)
Abrasion 70.000 rubs ISO 12947-2
Pilling ≥ 4-5 ISO 12945-2
Fastness to light ≥ 5 ISO 105-B02 (yarn dyed)
Flammability wool is naturally flame retardant, rohi wool fabrics satisfy the following standards, with no additional flame retardant finish:, CAL TB 117 – 2013, DIN EN 1021-1/ -2, BS 5852 part 1: 1979, UNI 9175 1 IM, ÖNORM B1/Q1, IMO 2014/90/EU Marine Equipment Directive (MED)NZS 3837 Class 2. With additional flame retardant finish: BS 5852: 2006 Crib5, DIN 4102-1 B2, DIN EN 13501-1 E, FAR 25.853 12 sec. vertical, BKZ 5.3 SN 198898

Upholstery Fabrics

Credo

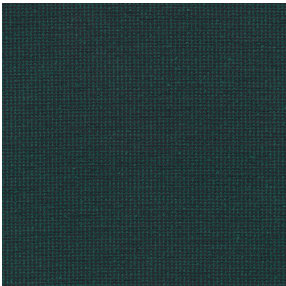
Category 4 | CR



Textile mill Rohi
Composition 95% New Wool, 5% PA (polyamide)
Weight 610 g/m² - 870 g/lfm
Abrasion 100.000 rubs, ISO 12947-2
Pilling ≥ 4-5, ISO 12945-2
Fastness to light ≥ 5, ISO 105-B02
Flammability FAR 25.853 (12 sec. vertical), CAL TB 117 - 2013, DIN 4102-1 B2, DIN EN 13501-1, DIN EN 1021 -1 und -2, BS 5852:1979 (part1), BS 5852:2006 (part2) Crib5, BKZ: 5.3 SN 198898, UNI 9175 (1 IM), NF P92 503-507 M2, IMO: 2014/90/EU Marine Equipment Directive

Encircle

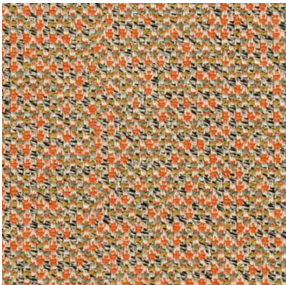
Category 4 | EN



Textile mill kvadrat
Composition 100% Trevira CS
Weight 560 g/m² (18.06 oz/sq ft)
Sustainability Greenguard Gold, HPD, EPD
Abrasion 80,000 Martindale
Pilling 4 (ISO 1-5)
Fastness to light 6
Flammability BS 5852 Crib 5 • AS/NZS 3837 class 1 • DIN 4102 B1 • IMO FTP Code 2010 Part 8 • NF P 92 507 M1 • NFPA 701 • ÖNORM B1/Q1 • NF D 60 013 • SN 198 898 5.2 • EN 1021-1/2 • UNI 9175 1IM • US Cal. Bull. 117-2013 • ASTM E84 Class A Unadhered • BS 5867 part 2 type B • EN 13501-1, B-s1, d0 • CAN ULC S102 • CAN ULC S109

Mica

Category 4 | MI

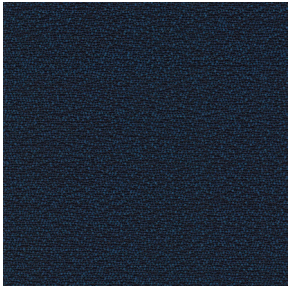


Textile mill Rohi
Composition 95% virgin wool 5% polyamide
Weight 600 g/m² - 840 g/lfm
Abrasion ≥ 70.000 rubs ISO 12947-2
Pilling ≥ 4-5 ISO 12945-2
Fastness to light ≥ 5 ISO 105-B02 (yarn dyed)
Flammability wool is naturally flame retardant, rohi wool fabrics satisfy the following standards with no additional flame retardant finish: CAL TB 117 – 2013 DIN EN 1021-1/ -2, BS 5852 part 1: 1979, UNI 9175 1 IM, ÖNORM B1/Q1, IMO 2014/90/ EU Marine Equipment Directive (MED). With additional flame retardant finish: BS 5852: 2006 Crib5, DIN 4102-1 B2, DIN EN 13501-1 E, FAR 25.853 12 sec. vertical

Upholstery Fabrics

Shake

Category 4 | SH

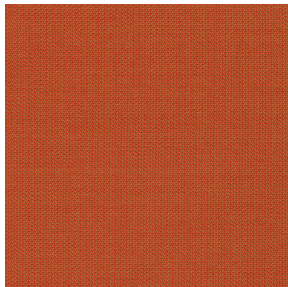


All colorways available

Textile mill Rohi
Composition 95% WV 5% PA
Weight 440 g/m² - 660 g/lm
Abrasion ≥ 70.000 rubs ISO 12947-2
Pilling ≥ 4-5 , ISO 12945-2
Fastness to light ≥ 5, ISO 105-B02 (yarn dyed)
Flammability CAL TB 117 - 2013, DIN EN 1021 -1 / -2, BS 5852:1979 (part1), UNI 9175 (1 IM), ÖNORM B1/Q1, IMO 2014/90/EU Marine Equipment Directive.

Topia

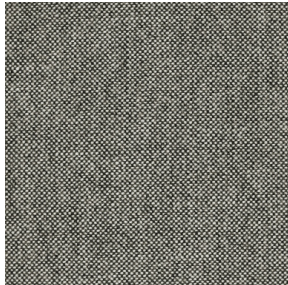
Category 4 | TP



Textile mill Rohi
Composition 95% Wool, 5% PA
Weight 440 g/m² - 660 g/lfm
Abrasion 50.000 rubs, ISO 12947-2
Pilling ≥ 4-5, ISO 12945-2
Fastness to light ≥ 5, ISO 105-B02
Flammability FAR 25.853 (12 Sek. vertikal), CAL TB 117 - 2013, DIN 4102-1 B2, DIN EN 13501-1, DIN EN 1021 -1 and -2, BS 5852:1979 (part1), BS 5852:2006 (part2) Crib5, BKZ: 5.3 SN 198898, UNI 9175 (1 IM), IMO: 2014/90/EU Marine Equipment Directive, Train: EN 45545-2 R21 ISO 5660-1 (HL3)

Hallingdal 65

Category 5 | HA



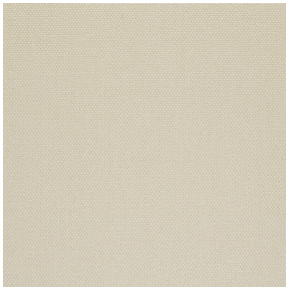
All colorways available

Textile mill Kvadrat
Composition 70% New wool, 30% Viscose
Weight 795 g/lin.m
Sustainability Complies with EU ecolabel "The Flower"
Abrasion 100.000 Martindale
Pilling 3-4
Fastness to light 7
Flammability AS/NZS 1530.3, BS 5852 Crib 5, BS 5852 part 1, EN 1021-1/2, IMO FTP Code 2010 Part 8, NF D 60 013, NFPA 260, SN 198 898 5.3 with treatment, UNI 9175 1IM, US Cal. Bull. 117-2013, ÖNORM B1/ Q1, BS 5852 ignition source 3

Upholstery Fabrics

Steelcut 3

Category 5 | CT

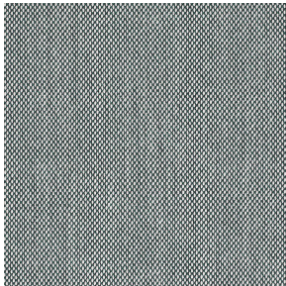


All colorways available

Textile mill Kvadrat
Composition 90% New wool (worsted), 10% Nylon
Weight 825 g/lin.m
Sustainability Complies with EU ecolabel “The Flower”
Abrasion 100.000 Martindale
Pilling 3-4
Fastness to light 6
Flammability AS/NZS 3837, class 2, BS 5852 part 1, EN 1021-1/2, IMO FTP Code 2010 Part 8, NF D 60 013, SN 198 898 5.3 with treatment, UNI 9175 1IM, US Cal. Bull. 117-2013, ÖNORM B1/ Q1, BS 5852 Crib 5 with treatment, NFPA 260, AS/NZS 1530.3

Steelcut Trio 3

Category 5 | TR

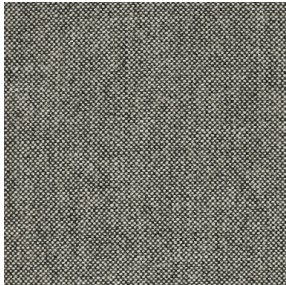


All colorways available

Textile mill Kvadrat
Composition 90% New wool (worsted), 10% Nylon
Weight 770 g/lin.m
Sustainability Complies with EU ecolabel “The Flower”
Abrasion 100.000 Martindale
Pilling 4
Fastness to light 5
Flammability AS/NZS 3837, class 2, BS 5852 part 1, EN 1021-1/2, IMO FTP Code 2010 Part 8, NF D 60 013, NFPA 260, SN 198 898 5.3 with treatment, UNI 9175 1IM, US Cal. Bull. 117-2013, ÖNORM B1/ Q1, BS 5852 Crib 5 with treatment, AS/NZS 1530.3, BS 5852 ignition source 3

Vidar 4

Category 5 | VI



All colorways available

Textile mill Kvadrat
Composition 94% new wool 6% nylon
Weight 770 g/m² (24.84 oz/sq ft)
Sustainability Complies with EU ecolabel “The Flower”
Abrasion 100,000 Martindale
Pilling 4 (ISO 1-5)
Fastness to light 7
Flammability BS 5852 crib 5 with treatment • BS 5852 part 1 • IMO FTP Code 2010 Part 8 • NF D 60 013 • NFPA 260 • UNI 9175 1IM • US Cal. Bull. 117-2013 • EN 1021-1/2 • AS/NZS 3837 class 2 • GB 50222 B1 with treatment (Chinese) • SN 198 898 5.3 with treatment • IMO FTP Code 2010 Part 7 with treatment • NFPA 701 with treatment

Upholstery Fabrics

Judith

Category 6 | JUDCR



Textile mill Pierre Frey

Composition 79% Wool - 21% Cotton

Bouclé/loop pile fabric

Weight 1181 g/lm

Abrasion > 50.000 Martindale

Flammability BS5852 Cigarette & Match test - BS5852 Cigarette test - CRIB 5, in conjunction with suitable combustion modified foam - NFPA 260 - Class 1 - EN1021-1-20

Louison

Category 7 | LOUCR



Textile mill Pierre Frey

Composition 41% Wool - 39% Alpaca - 17% Cotton - 3% Acrylic

Weight 1349 g / ml

Bouclé/loop pile fabric

Abrasion > 50.000 Martindale

Flammability BS5852 Cigarette & Match test - BS5852 Cigarette test - CRIB 5, in conjunction with suitable combustion modified foam - NFPA 260 - Class 1 - EN1021-1-20

Some fabrics are only available in a selection of colors.

COM / COL

Customer's own leather (COL)

Customer's own material/leather

Customers can supply their own fabric or own leather if preceded by consultation with Bulo or your Bulo partner.

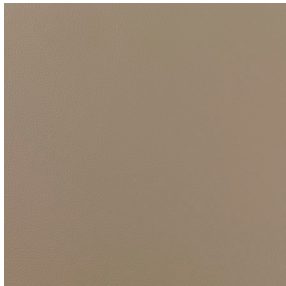
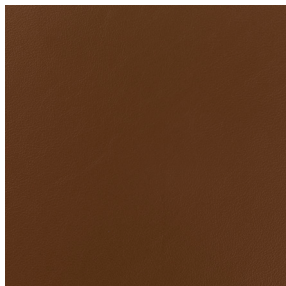
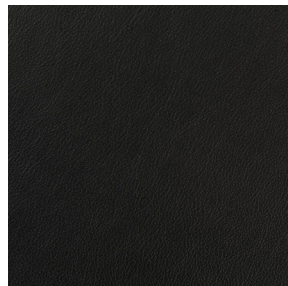
Bulo reserves the right to reject the COM/COL we find unsuitable.

Warranty conditions on COM/COL available on request.

Fabric requirement for 1 SL chair: 1.1,5 m/60" x 1,4 m/55"

Leather requirement available on request, depending on the quantity of chairs

Upholstery Leather only for SL58

Sand grey**Dark green****Dark brown****Tobacco****Black**

Origin European bullhides

Thickness 1.0/1.2 mm

Surface Pigmented nappa leather

Flammability BS 5852 PART 1 (ignition source 0 and 1)

EN 1021-1 and 1021-2

CAL TB 117:2013

Leather is a natural material with natural variation in color and surface structure. No two are alike. A variety of markings like healed scars and abrasions may be visible and are not considered defects but are characteristics of genuine leather.

On inquiry and at a surcharge, other leather colors than our standard colors may be available.